

National Index of Violence and Harm

	<u>1996-2002 Summary</u>	1996	1997	1998	1999	2000	2001	2002	Corr.	Sig.
Personal Index		96.6	94.7	90.4	86.5	84.7	85.3	86.5	-0.874	**
<u>Interpersonal</u>		<u>95.6</u>	<u>93.0</u>	<u>86.9</u>	<u>82.8</u>	<u>80.3</u>	<u>79.9</u>	<u>79.7</u>	<u>-1.000</u>	**
1 Homicide		89.9	82.3	75.8	68.6	68.1	69.3	69.3	-0.802	*
2 Sexual Offenses		99.3	100.3	94.3	91.3	89.3	88.0	90.1	-0.857	**
3 Battery		98.2	98.5	94.2	89.1	86.6	85.6	82.9	-0.976	**
4 Robbery		91.2	83.9	74.4	67.3	66.3	68.1	67.0	-0.881	**
5 Reckless Behavior		99.6	100.0	95.6	97.9	91.2	88.7	89.3	-0.910	**
<u>Intrapersonal</u>		<u>99.0</u>	<u>98.8</u>	<u>99.1</u>	<u>95.6</u>	<u>95.6</u>	<u>98.7</u>	<u>103.5</u>	<u>-0.180</u>	
6 Suicide/Self-Injury		97.6	95.3	94.3	89.4	88.9	91.8	93.9	-0.786	*
7 Deaths from Substance Abuse		100.4	102.4	104.0	101.7	102.2	105.7	113.1	0.810	*
a Smoking		100.5	101.2	101.9	103.2	102.6	102.2	102.4	0.786	*
b Alcohol		97.5	96.2	95.0	94.8	94.7	95.7	95.4	-0.643	
c Other Drugs		103.2	109.7	114.9	107.3	109.4	119.2	141.6	0.810	*
Societal Index		97.4	100.7	99.5	99.6	97.5	100.4	95.4	-0.286	
<u>Government</u>		<u>89.3</u>	<u>116.6</u>	<u>119.7</u>	<u>124.4</u>	<u>119.6</u>	<u>129.2</u>	<u>110.8</u>	<u>0.548</u>	
8 Correctional System		94.4	120.5	116.0	143.1	132.9	115.4	117.9	0.452	
a Capital Punishment		79.4	129.1	117.2	167.0	143.2	110.1	117.2	0.407	
b Nonviolent Incarceration		109.5	112.0	114.8	119.3	122.6	120.8	118.6	0.833	*
9 Law Enforcement		84.2	112.8	123.5	105.7	106.3	143.0	103.8	0.429	
a Deaths by Police Intervention		103.2	94.7	104.1	100.6	87.9	104.8	98.4	-0.024	
b Abuse/Misconduct		65.2	130.9	142.9	110.7	124.6	181.2	109.1	0.429	
<u>Corporate</u>		<u>89.4</u>	<u>87.1</u>	<u>88.1</u>	<u>85.2</u>	<u>83.2</u>	<u>83.6</u>	<u>81.1</u>	<u>-0.952</u>	*
10 Air Pollution		83.6	82.8	86.5	81.8	79.3	80.1	78.9	-0.905	**
a People Experiencing Pollution		57.7	62.0	76.7	70.9	68.0	73.8	80.2	0.167	
b Ambient Pollution Level		96.4	92.7	91.5	90.0	86.2	86.1	78.0	-1.000	**
c Pollution Emitted		96.7	93.7	91.3	84.6	83.6	80.5	78.4	-1.000	**
11 Consumers/Employees		95.3	91.4	89.8	88.7	87.1	87.0	83.3	-1.000	**
a Product Injuries		94.5	88.8	93.0	95.3	96.9	102.4	101.7	0.548	
b Occupational Injury/Illness		91.4	87.7	82.7	77.8	75.3	70.4	65.4	-1.000	**
c Occupational Fatalities		100.0	97.7	93.6	92.9	89.3	88.3	82.9	-0.994	**
<u>Family</u>		<u>101.0</u>	<u>100.5</u>	<u>94.3</u>	<u>90.6</u>	<u>88.4</u>	<u>87.8</u>	<u>86.4</u>	<u>-0.929</u>	**
12 Domestic Violence		102.3	107.2	100.4	101.1	93.8	91.3	89.2	-0.714	*
13 Child Abuse/Neglect		99.7	93.7	88.2	80.1	83.0	84.3	83.6	-0.786	*
<u>Structural</u>		<u>101.5</u>	<u>100.0</u>	<u>98.3</u>	<u>99.1</u>	<u>97.9</u>	<u>100.6</u>	<u>98.0</u>	<u>-0.503</u>	
14 Social Negligence		99.0	97.7	103.4	105.8	109.8	118.3	123.3	0.905	**
a Lack of Health Insurance		101.3	104.5	105.8	101.1	100.4	103.2	107.7	0.452	
b Hunger		104.3	103.5	115.1	117.4	126.0	143.0	162.0	0.976	**
c Drop-Out Rate		87.9	79.2	82.5	87.3	84.2	87.4	62.0	-0.548	
d Homelessness		102.5	103.5	110.3	117.4	128.8	139.8	161.7	1.000	**
15 Infant Mortality/Life Expectancy		97.4	95.9	95.5	94.9	93.2	91.8	93.0	-0.976	**
a Infant Mortality		96.1	94.7	94.7	93.4	91.4	89.5	92.1	-0.922	**
b Life Expectancy		98.8	97.1	96.3	96.3	95.0	94.2	93.8	-0.994	**
16 Hate Crimes		98.0	95.7	89.6	89.3	89.5	107.2	81.5	-0.476	
17 Employment Discrimination		89.1	92.1	89.6	86.7	88.6	89.8	93.3	-0.143	
18 Poverty Disparity		99.8	98.9	98.4	97.3	96.7	94.6	95.4	-0.976	**
a Class		103.0	105.4	104.6	105.1	105.4	105.9	108.4	0.898	**
b Race		96.3	89.5	90.0	85.9	83.8	79.7	80.6	-0.952	**
c Gender		101.8	101.8	101.5	101.0	100.8	98.1	97.0	-0.635	
d Age		98.3	99.0	97.3	91.6	90.7	87.4	85.7	-0.976	**
19 Gang Membership		125.8	119.8	113.3	120.6	109.6	101.8	101.7	-0.262	

1995 National Index of Violence and Harm

	<i>Population (100,000s):</i>	<i>Unadjusted</i> 2662.78	<i>Adjusted</i> <i>Data</i>	<i>Indicator</i> <i>Index</i>	<i>Variable</i> <i>Index</i>	<i>Overall</i> <i>Index</i>
Personal Index						100.0
<u>Interpersonal</u>						<u>100.0</u>
1 Homicide		21,606	8.1	100.0	100.0	
2 Sexual Offenses					100.0	
a Forcible Rape		97,470	36.6	100.0		
b Other Offenses		72,272	36.8	100.0		
3 Battery					100.0	
a Aggravated		1,099,207	412.8	100.0		
b Other Assaults		975,418	496.5	100.0		
4 Robbery		580,509	218.0	100.0	100.0	
5 Reckless Behavior		1,220,517	621.3	100.0	100.0	
<u>Intrapersonal</u>						<u>100.0</u>
6 Suicide/Self-Injury		31,165	11.7	100.0	100.0	
7 Deaths from Substance Abuse					100.0	
a Smoking		205,247	77.1	100.0		
b Alcohol		45,735	17.2	100.0		
c Other Drugs		16,991	6.4	100.0		
Societal Index						100.0
<u>Government</u>						<u>100.0</u>
8 Correctional System					100.0	
a Capital Punishment		56	0.0210	100.0		
b Nonviolent Incarceration		474,900	178.3	100.0		
9 Law Enforcement					100.0	
a Deaths by Police Intervention		294	0.110	100.0		
b Abuse/Misconduct		50	18.8	100.0		
<u>Corporate</u>						<u>100.0</u>
10 Air Pollution					100.0	
a People Experiencing Pollution		168.5	63293.8	100.0		
b Ambient Pollution Level				100.0		
c Pollution Emitted		100.0	100.0	100.0		
11 Consumers/Employees					100.0	
a Product Injuries		12,920,280	4852.2	100.0		
b Occupational Injury/Illness			8.1	100.0		
c Occupational Fatalities			5.159	100.0		
<u>Family</u>						<u>100.0</u>
12 Domestic Violence		104,952	53.4	100.0	100.0	
13 Child Abuse/Neglect		966,091	14.7	100.0	100.0	
<u>Structural</u>						<u>100.0</u>
14 Social Negligence					100.0	
a Lack of Health Insurance			14.1	100.0		
b Hunger				100.0		
i) Food Requests				100.0		
ii) Food Insecurity			11.8	100.0		
c Drop-Out Rate			5.383	100.0		
d Homelessness				100.0		
15 Infant Mortality/Life Expectancy					100.0	
a Infant Mortality			7.6	100.0		
b Life Expectancy			24.2	100.0		
16 Hate Crimes		10,469	3.9	100.0	100.0	
17 Employment Discrimination		103,272	38.8	100.0	100.0	
18 Poverty Disparity					100.0	
a Class			13.02	100.0		
b Race			3.25	100.0		
c Gender			1.26	100.0		
d Age			1.84	100.0		
19 Gang Membership		664,906	249.7	100.0	100.0	

1996 National Index of Violence and Harm

	<i>Population (100,000s):</i>	<i>Unadjusted</i> 2693.94	<i>Adjusted</i> <i>Data</i>	<i>Indicator</i> <i>Index</i>	<i>Variable</i> <i>Index</i>	<i>Overall</i> <i>Index</i>
Personal Index						96.6
<u>Interpersonal</u>						<u>95.6</u>
1 Homicide		19,645	7.3	89.9	89.9	
2 Sexual Offenses					99.3	
a Forcible Rape		96,252	35.7	97.6		
b Other Offenses		70,619	37.2	101.1		
3 Battery					98.2	
a Aggravated		1,037,049	385.0	93.3		
b Other Assaults		972,984	512.3	103.2		
4 Robbery		535,594	198.8	91.2	91.2	
5 Reckless Behavior		1,175,090	618.7	99.6	99.6	
<u>Intrapersonal</u>						<u>99.0</u>
6 Suicide/Self-Injury		30,786	11.4	97.6	97.6	
7 Deaths from Substance Abuse					100.4	
a Smoking		208,698	77.5	100.5		
b Alcohol		45,108	16.7	97.5		
c Other Drugs		17,737	6.6	103.2		
Societal Index						97.4
<u>Government</u>						<u>89.3</u>
8 Correctional System					94.4	
a Capital Punishment		45	0.0167	79.4		
b Nonviolent Incarceration		525,900	195.2	109.5		
9 Law Enforcement					84.2	
a Deaths by Police Intervention		307	0.114	103.2		
b Abuse/Misconduct		33	12.2	65.2		
<u>Corporate</u>						<u>89.4</u>
10 Air Pollution					83.6	
a People Experiencing Pollution		98.4	36533.5	57.7		
b Ambient Pollution Level				96.4		
c Pollution Emitted		97.8	96.7	96.7		
11 Consumers/Employees					95.3	
a Product Injuries		12,348,896	4583.9	94.5		
b Occupational Injury/Illness			7.4	91.4		
c Occupational Fatalities			5.160	100.0		
<u>Family</u>						<u>101.0</u>
12 Domestic Violence		103,800	54.7	102.3	102.3	
13 Child Abuse/Neglect		955,786	14.7	99.7	99.7	
<u>Structural</u>						<u>101.5</u>
14 Social Negligence					99.0	
a Lack of Health Insurance			14.3	101.3		
b Hunger				104.3		
i) Food Requests			9.0%	107.7		
ii) Food Insecurity			11.9	100.8		
c Drop-Out Rate			4.732	87.9		
d Homelessness			4%	102.5		
15 Infant Mortality/Life Expectancy					97.4	
a Infant Mortality			7.3	96.1		
b Life Expectancy			23.9	98.8		
16 Hate Crimes		10,379	3.9	98.0	98.0	
17 Employment Discrimination		93,085	34.6	89.1	89.1	
18 Poverty Disparity					99.8	
a Class			13.42	103.0		
b Race			3.13	96.3		
c Gender			1.29	101.8		
d Age			1.81	98.3		
19 Gang Membership		846,428	314.2	125.8	125.8	

1997 National Index of Violence and Harm

	<i>Population (100,000s):</i>	<i>Unadjusted</i> 2726.47	<i>Adjusted</i> Data	<i>Indicator</i> Index	<i>Variable</i> Index	<i>Overall</i> Index
Personal Index						94.7
<u>Interpersonal</u>						<u>93.0</u>
1 Homicide		18,208	6.7	82.3	82.3	
2 Sexual Offenses					100.3	
a Forcible Rape		96,153	35.3	96.3		
b Other Offenses		70,237	38.3	104.2		
3 Battery					98.5	
a Aggravated		1,023,201	375.3	90.9		
b Other Assaults		965,063	526.7	106.1		
4 Robbery		498,534	182.8	83.9	83.9	
5 Reckless Behavior		1,138,707	621.4	100.0	100.0	
<u>Intrapersonal</u>						<u>98.8</u>
6 Suicide/Self-Injury		30,419	11.2	95.3	95.3	
7 Deaths from Substance Abuse					102.4	
a Smoking		212,625	78.0	101.2		
b Alcohol		45,052	16.5	96.2		
c Other Drugs		19,088	7.0	109.7		
Societal Index						100.7
<u>Government</u>						<u>116.6</u>
8 Correctional System					120.5	
a Capital Punishment		74	0.0271	129.1		
b Nonviolent Incarceration		544,600	199.7	112.0		
9 Law Enforcement					112.8	
a Deaths by Police Intervention		285	0.105	94.7		
b Abuse/Misconduct		67	24.6	130.9		
<u>Corporate</u>						<u>87.1</u>
10 Air Pollution					82.8	
a People Experiencing Pollution		107.0	39244.9	62.0		
b Ambient Pollution Level				92.7		
c Pollution Emitted		96.0	93.7	93.7		
11 Consumers/Employees					91.4	
a Product Injuries		11,752,941	4310.7	88.8		
b Occupational Injury/Illness			7.1	87.7		
c Occupational Fatalities			5.041	97.7		
<u>Family</u>						<u>100.5</u>
12 Domestic Violence		104,997	57.3	107.2	107.2	
13 Child Abuse/Neglect		881,464	13.8	93.7	93.7	
<u>Structural</u>						<u>100.0</u>
14 Social Negligence					97.7	
a Lack of Health Insurance			14.8	104.5		
b Hunger				103.5		
i) Food Requests			13.2%	120.5		
ii) Food Insecurity			10.2	86.4		
c Drop-Out Rate			4.265	79.2		
d Homelessness			2%	103.5		
15 Infant Mortality/Life Expectancy					95.9	
a Infant Mortality			7.2	94.7		
b Life Expectancy			23.5	97.1		
16 Hate Crimes		10,255	3.8	95.7	95.7	
17 Employment Discrimination		97,375	35.7	92.1	92.1	
18 Poverty Disparity					98.9	
a Class			13.73	105.4		
b Race			2.91	89.5		
c Gender			1.29	101.8		
d Age			1.83	99.0		
19 Gang Membership		815,896	299.3	119.8	119.8	

1998 National Index of Violence and Harm

	<i>Population (100,000s):</i>	<i>Unadjusted</i> 2758.54	<i>Adjusted</i> <i>Data</i>	<i>Indicator</i> <i>Index</i>	<i>Variable</i> <i>Index</i>	<i>Overall</i> <i>Index</i>
Personal Index						90.4
<u>Interpersonal</u>						<u>86.9</u>
1 Homicide		16,974	6.2	75.8	75.8	
2 Sexual Offenses					94.3	
a Forcible Rape		93,144	33.8	92.2		
b Other Offenses		65,967	35.5	96.4		
3 Battery					94.2	
a Aggravated		976,583	354.0	85.8		
b Other Assaults		947,596	509.6	102.6		
4 Robbery		447,186	162.1	74.4	74.4	
5 Reckless Behavior		1,104,917	594.2	95.6	95.6	
<u>Intrapersonal</u>						<u>99.1</u>
6 Suicide/Self-Injury		30,459	11.0	94.3	94.3	
7 Deaths from Substance Abuse					104.0	
a Smoking		216,772	78.6	101.9		
b Alcohol		45,011	16.3	95.0		
c Other Drugs		20,227	7.3	114.9		
Societal Index						99.5
<u>Government</u>						<u>119.7</u>
8 Correctional System					116.0	
a Capital Punishment		68	0.0247	117.2		
b Nonviolent Incarceration		564,700	204.7	114.8		
9 Law Enforcement					123.5	
a Deaths by Police Intervention		317	0.115	104.1		
b Abuse/Misconduct		74	26.8	142.9		
<u>Corporate</u>						<u>88.1</u>
10 Air Pollution					86.5	
a People Experiencing Pollution		133.9	48540.2	76.7		
b Ambient Pollution Level				91.5		
c Pollution Emitted		94.6	91.3	91.3		
11 Consumers/Employees					89.8	
a Product Injuries		12,447,887	4512.5	93.0		
b Occupational Injury/Illness			6.7	82.7		
c Occupational Fatalities			4.826	93.6		
<u>Family</u>						<u>94.3</u>
12 Domestic Violence		99,776	53.7	100.4	100.4	
13 Child Abuse/Neglect		903,395	13.0	88.2	88.2	
<u>Structural</u>						<u>98.3</u>
14 Social Negligence					103.4	
a Lack of Health Insurance			15.0	105.8		
b Hunger				115.1		
i) Food Requests			10.1%	131.1		
ii) Food Insecurity			11.7	99.2		
c Drop-Out Rate			4.439	82.5		
d Homelessness			8%	110.3		
15 Infant Mortality/Life Expectancy					95.5	
a Infant Mortality			7.2	94.7		
b Life Expectancy			23.3	96.3		
16 Hate Crimes		9,722	3.5	89.6	89.6	
17 Employment Discrimination		95,906	34.8	89.6	89.6	
18 Poverty Disparity					98.4	
a Class			13.63	104.6		
b Race			2.92	90.0		
c Gender			1.28	101.5		
d Age			1.79	97.3		
19 Gang Membership		780,233	282.8	113.3	113.3	

1999 National Index of Violence and Harm

	<i>Population (100,000s):</i>	<i>Unadjusted</i> 2790.40	<i>Adjusted</i> <i>Data</i>	<i>Indicator</i> <i>Index</i>	<i>Variable</i> <i>Index</i>	<i>Overall</i> <i>Index</i>
Personal Index						86.5
<u>Interpersonal</u>						<u>82.8</u>
1 Homicide		15,522	5.6	68.6	68.6	
2 Sexual Offenses					91.3	
a Forcible Rape		89,411	32.0	87.5		
b Other Offenses		60,120	35.0	95.1		
3 Battery					89.1	
a Aggravated		911,740	326.7	79.2		
b Other Assaults		844,728	491.6	99.0		
4 Robbery		409,371	146.7	67.3	67.3	
5 Reckless Behavior		1,045,115	608.2	97.9	97.9	
<u>Intrapersonal</u>						<u>95.6</u>
6 Suicide/Self-Injury		29,199	10.46	89.4	89.4	
7 Deaths from Substance Abuse					101.7	
a Smoking		221,909	79.5	103.2		
b Alcohol		45,430	16.3	94.8		
c Other Drugs		19,102	6.8	107.3		
Societal Index						99.6
<u>Government</u>						<u>124.4</u>
8 Correctional System					143.1	
a Capital Punishment		98	0.0351	167.0		
b Nonviolent Incarceration		593,600	212.7	119.3		
9 Law Enforcement					105.7	
a Deaths by Police Intervention		310	0.111	100.6		
b Abuse/Misconduct		58	20.8	110.7		
<u>Corporate</u>						<u>85.2</u>
10 Air Pollution					81.8	
a People Experiencing Pollution		125.3	44903.9	70.9		
b Ambient Pollution Level				90.0		
c Pollution Emitted		88.6	84.6	84.6		
11 Consumers/Employees					88.7	
a Product Injuries		12,909,268	4626.3	95.3		
b Occupational Injury/Illness			6.3	77.8		
c Occupational Fatalities			4.790	92.9		
<u>Family</u>						<u>90.6</u>
12 Domestic Violence		92,849	54.0	101.1	101.1	
13 Child Abuse/Neglect		826,162	11.8	80.1	80.1	
<u>Structural</u>						<u>99.1</u>
14 Social Negligence					105.8	
a Lack of Health Insurance			14.3	101.1		
b Hunger				117.4		
i) Food Requests			14.5%	148.4		
ii) Food Insecurity			10.2	86.4		
c Drop-Out Rate			4.699	87.3		
d Homelessness			8%	117.4		
15 Infant Mortality/Life Expectancy					94.9	
a Infant Mortality			7.1	93.4		
b Life Expectancy			23.3	96.3		
16 Hate Crimes		9,802	3.5	89.3	89.3	
17 Employment Discrimination		93,837	33.6	86.7	86.7	
18 Poverty Disparity					97.3	
a Class			13.69	105.1		
b Race			2.79	85.9		
c Gender			1.28	101.0		
d Age			1.69	91.6		
19 Gang Membership		840,500	301.2	120.6	120.6	

2000 National Index of Violence and Harm

	<i>Population (100,000s):</i>	<i>Unadjusted 2821.78</i>	<i>Adjusted Data</i>	<i>Indicator Index</i>	<i>Variable Index</i>	<i>Overall Index</i>
Personal Index						84.7
<u>Interpersonal</u>						<u>80.3</u>
1 Homicide		15,586	5.5	68.1	68.1	
2 Sexual Offenses					89.3	
a Forcible Rape		90,178	32.0	87.3		
b Other Offenses		61,172	33.6	91.3		
3 Battery					86.6	
a Aggravated		911,706	323.1	78.3		
b Other Assaults		858,385	471.4	94.9		
4 Robbery		408,016	144.6	66.3	66.3	
5 Reckless Behavior		1,031,437	566.4	91.2	91.2	
<u>Intrapersonal</u>						<u>95.6</u>
6 Suicide/Self-Injury		29,350	10.40	88.9	88.9	
7 Deaths from Substance Abuse					102.2	
a Smoking		223,100	79.1	102.6		
b Alcohol		45,910	16.3	94.7		
c Other Drugs		19,698	7.0	109.4		
Societal Index						97.5
<u>Government</u>						<u>119.6</u>
8 Correctional System					132.9	
a Capital Punishment		85	0.0301	143.2		
b Nonviolent Incarceration		616,800	218.6	122.6		
9 Law Enforcement					106.3	
a Deaths by Police Intervention		274	0.097	87.9		
b Abuse/Misconduct		66	23.4	124.6		
<u>Corporate</u>						<u>83.2</u>
10 Air Pollution					79.3	
a People Experiencing Pollution		121.4	43022.5	68.0		
b Ambient Pollution Level				86.2		
c Pollution Emitted		88.6	83.6	83.6		
11 Consumers/Employees					87.1	
a Product Injuries		13,262,071	4699.9	96.9		
b Occupational Injury/Illness			6.1	75.3		
c Occupational Fatalities			4.604	89.3		
<u>Family</u>						<u>88.4</u>
12 Domestic Violence		91,297	50.1	93.8	93.8	
13 Child Abuse/Neglect		879,000	12.2	83.0	83.0	
<u>Structural</u>						<u>97.9</u>
14 Social Negligence					109.8	
a Lack of Health Insurance			14.2	100.4		
b Hunger				126.0		
i) Food Requests			11.1%	163.1		
ii) Food Insecurity			10.5	89.0		
c Drop-Out Rate			4.530	84.2		
d Homelessness			11%	128.8		
15 Infant Mortality/Life Expectancy					93.2	
a Infant Mortality			6.9	91.4		
b Life Expectancy			23.0	95.0		
16 Hate Crimes		9,924	3.5	89.5	89.5	
17 Employment Discrimination		97,012	34.4	88.6	88.6	
18 Poverty Disparity					96.7	
a Class			13.72	105.4		
b Race			2.72	83.8		
c Gender			1.27	100.8		
d Age			1.67	90.7		
19 Gang Membership		772,500	273.8	109.6	109.6	

2001 National Index of Violence and Harm

	<i>Population (100,000s):</i>	<i>Unadjusted 2850.94</i>	<i>Adjusted Data</i>	<i>Indicator Index</i>	<i>Variable Index</i>	<i>Overall Index</i>
Personal Index						85.3
<u>Interpersonal</u>						<u>79.9</u>
1 Homicide		16,037	5.6	69.3	69.3	
2 Sexual Offenses					88.0	
a Forcible Rape		90,863	31.9	87.1		
b Other Offenses		62,997	32.7	88.9		
3 Battery					85.6	
a Aggravated		909,023	318.9	77.2		
b Other Assaults		898,298	466.5	93.9		
4 Robbery		423,557	148.6	68.1	68.1	
5 Reckless Behavior		1,061,019	550.9	88.7	88.7	
<u>Intrapersonal</u>						<u>98.7</u>
6 Suicide/Self-Injury		30,622	10.74	91.8	91.8	
7 Deaths from Substance Abuse					105.7	
a Smoking		224,523	78.8	102.2		
b Alcohol		46,852	16.4	95.7		
c Other Drugs		21,683	7.6	119.2		
Societal Index						100.4
<u>Government</u>						<u>129.2</u>
8 Correctional System					115.4	
a Capital Punishment		66	0.0232	110.1		
b Nonviolent Incarceration		614,200	215.4	120.8		
9 Law Enforcement					143.0	
a Deaths by Police Intervention		330	0.116	104.8		
b Abuse/Misconduct		97	34.0	181.2		
<u>Corporate</u>						<u>83.6</u>
10 Air Pollution					80.1	
a People Experiencing Pollution		133.1	46686.4	73.8		
b Ambient Pollution Level				86.1		
c Pollution Emitted		86.1	80.5	80.5		
11 Consumers/Employees					87.0	
a Product Injuries		14,163,817	4968.1	102.4		
b Occupational Injury/Illness			5.7	70.4		
c Occupational Fatalities			4.555	88.3		
<u>Family</u>						<u>87.8</u>
12 Domestic Violence		93,909	48.8	91.3	91.3	
13 Child Abuse/Neglect		903,089	12.4	84.3	84.3	
<u>Structural</u>						<u>100.6</u>
14 Social Negligence					118.3	
a Lack of Health Insurance			14.6	103.2		
b Hunger				143.0		
i) Food Requests			21.0%	195.3		
ii) Food Insecurity			10.7	90.7		
c Drop-Out Rate			4.704	87.4		
d Homelessness			10%	139.8		
15 Infant Mortality/Life Expectancy					91.8	
a Infant Mortality			6.8	89.5		
b Life Expectancy			22.8	94.2		
16 Hate Crimes		12,020	4.2	107.2	107.2	
17 Employment Discrimination		99,330	34.8	89.8	89.8	
18 Poverty Disparity					94.6	
a Class			13.79	105.9		
b Race			2.59	79.7		
c Gender			1.24	98.1		
d Age			1.61	87.4		
19 Gang Membership		725,000	254.3	101.8	101.8	

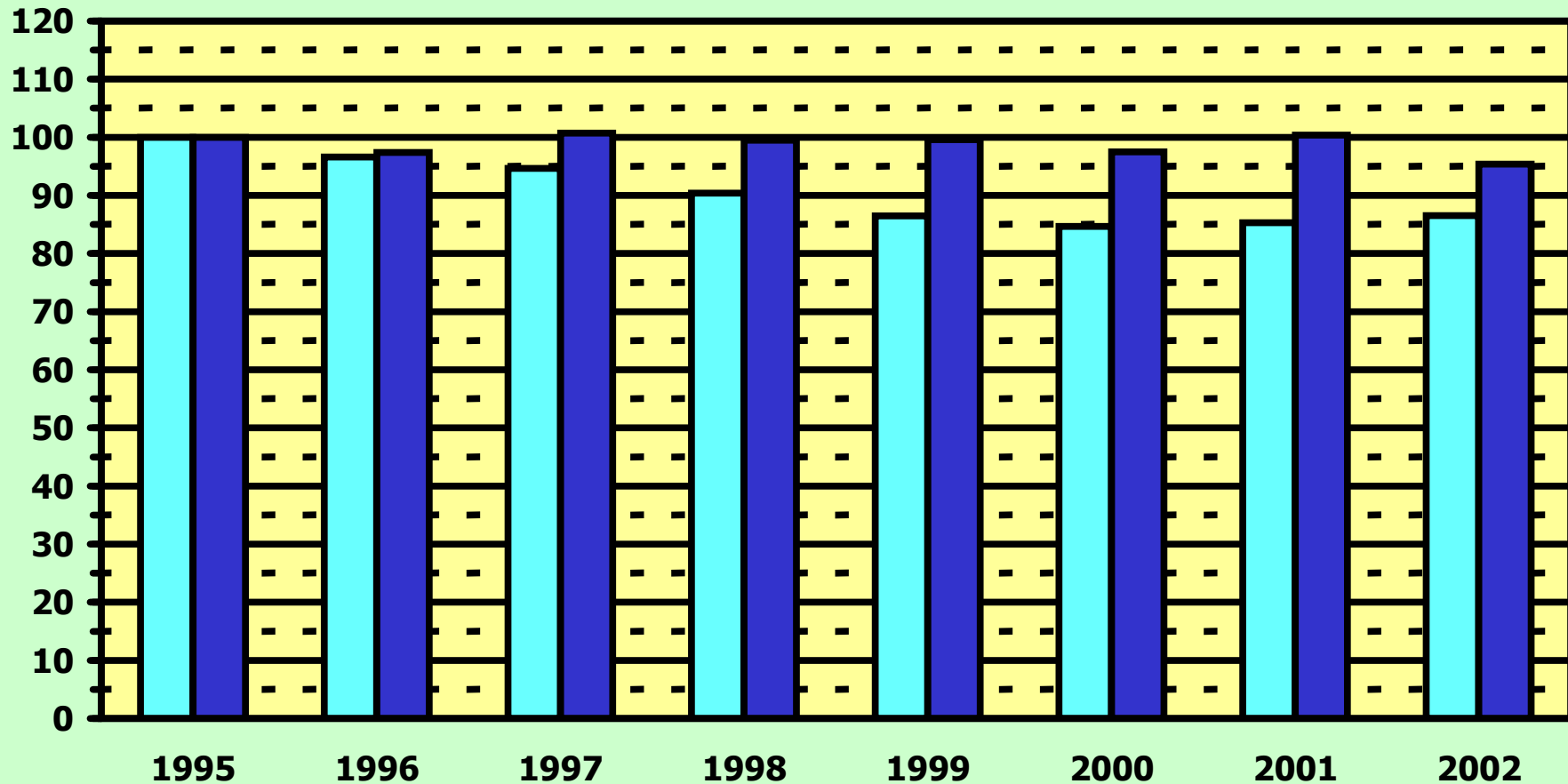
2002 National Index of Violence and Harm

	<i>Population (100,000s):</i>	<i>Unadjusted</i> 2879.74	<i>Adjusted</i> Data	<i>Indicator</i> Index	<i>Variable</i> Index	<i>Overall</i> Index
Personal Index						86.5
<u>Interpersonal</u>						<u>79.7</u>
1 Homicide		16,204	5.6	69.3	69.3	
2 Sexual Offenses					90.1	
a Forcible Rape		95,136	33.0	90.3		
b Other Offenses		67,833	33.1	89.9		
3 Battery					82.9	
a Aggravated		894,348	310.6	75.2		
b Other Assaults		921,676	449.3	90.5		
4 Robbery		420,637	146.1	67.0	67.0	
5 Reckless Behavior		1,138,689	555.1	89.3	89.3	
<u>Intrapersonal</u>						<u>103.5</u>
6 Suicide/Self-Injury		31,655	10.99	93.9	93.9	
7 Deaths from Substance Abuse					113.1	
a Smoking		227,346	78.9	102.4		
b Alcohol		47,185	16.4	95.4		
c Other Drugs		26,018	9.0	141.6		
Societal Index						95.4
<u>Government</u>						<u>110.8</u>
8 Correctional System					117.9	
a Capital Punishment		71	0.0247	117.2		
b Nonviolent Incarceration		609,000	211.5	118.6		
9 Law Enforcement					103.8	
a Deaths by Police Intervention		313	0.109	98.4		
b Abuse/Misconduct		59	20.5	109.1		
<u>Corporate</u>						<u>81.1</u>
10 Air Pollution					78.9	
a People Experiencing Pollution		146.2	50768.5	80.2		
b Ambient Pollution Level				78.0		
c Pollution Emitted		84.7	78.4	78.4		
11 Consumers/Employees					83.3	
a Product Injuries		14,211,020	4934.8	101.7		
b Occupational Injury/Illness			5.3	65.4		
c Occupational Fatalities			4.274	82.9		
<u>Family</u>						<u>86.4</u>
12 Domestic Violence		97,716	47.6	89.2	89.2	
13 Child Abuse/Neglect		895,569	12.3	83.6	83.6	
<u>Structural</u>						<u>98.0</u>
14 Social Negligence					123.3	
a Lack of Health Insurance			15.2	107.7		
b Hunger				162.0		
i) Food Requests			18.9%	229.9		
ii) Food Insecurity			11.1	94.1		
c Drop-Out Rate			3.340	62.0		
d Homelessness			17%	161.7		
15 Infant Mortality/Life Expectancy					93.0	
a Infant Mortality			7.0	92.1		
b Life Expectancy			22.7	93.8		
16 Hate Crimes		9,222	3.2	81.5	81.5	
17 Employment Discrimination		104,205	36.2	93.3	93.3	
18 Poverty Disparity					95.4	
a Class			14.12	108.4		
b Race			2.62	80.6		
c Gender			1.23	97.0		
d Age			1.58	85.7		
19 Gang Membership		731,500	254.0	101.7	101.7	

National Index of Violence and Harm 1995-2002



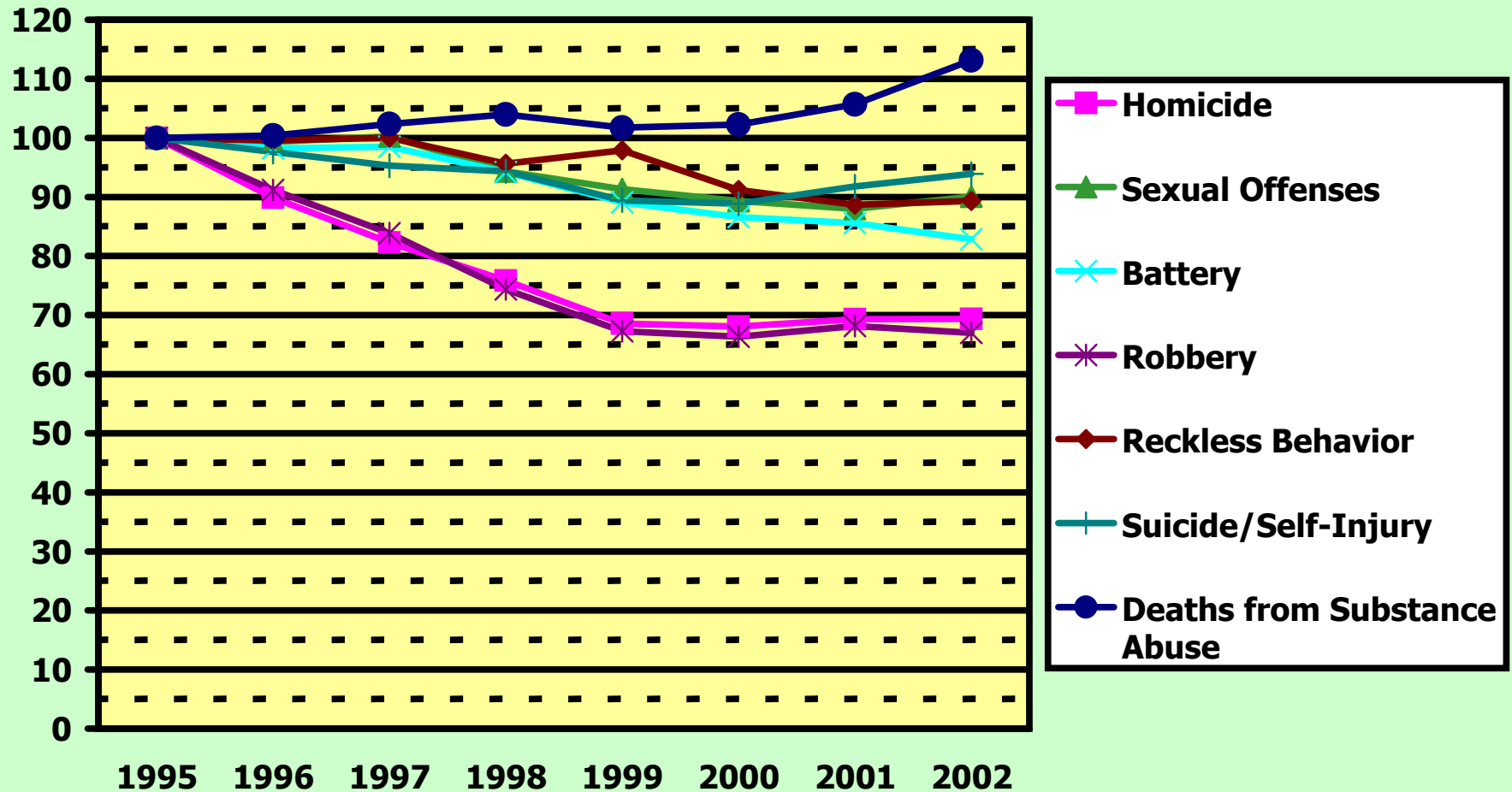
Personal Index Societal Index



Source: Manchester College Peace Studies Institute

National Index of Violence and Harm

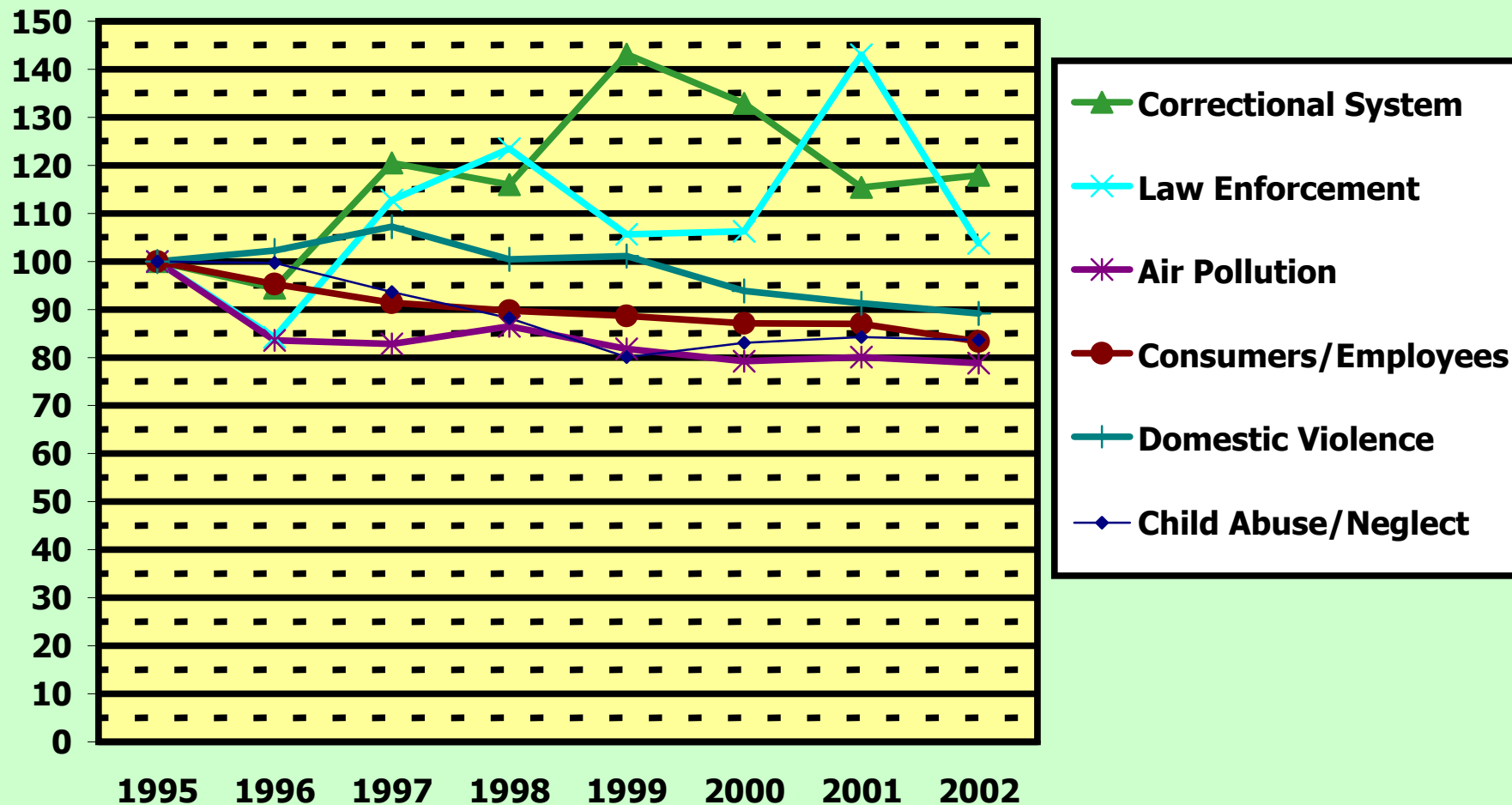
Inter/Intrapersonal Variables: 1995-2002



Source: Manchester College Peace Studies Institute, Copyright 2004

National Index of Violence and Harm

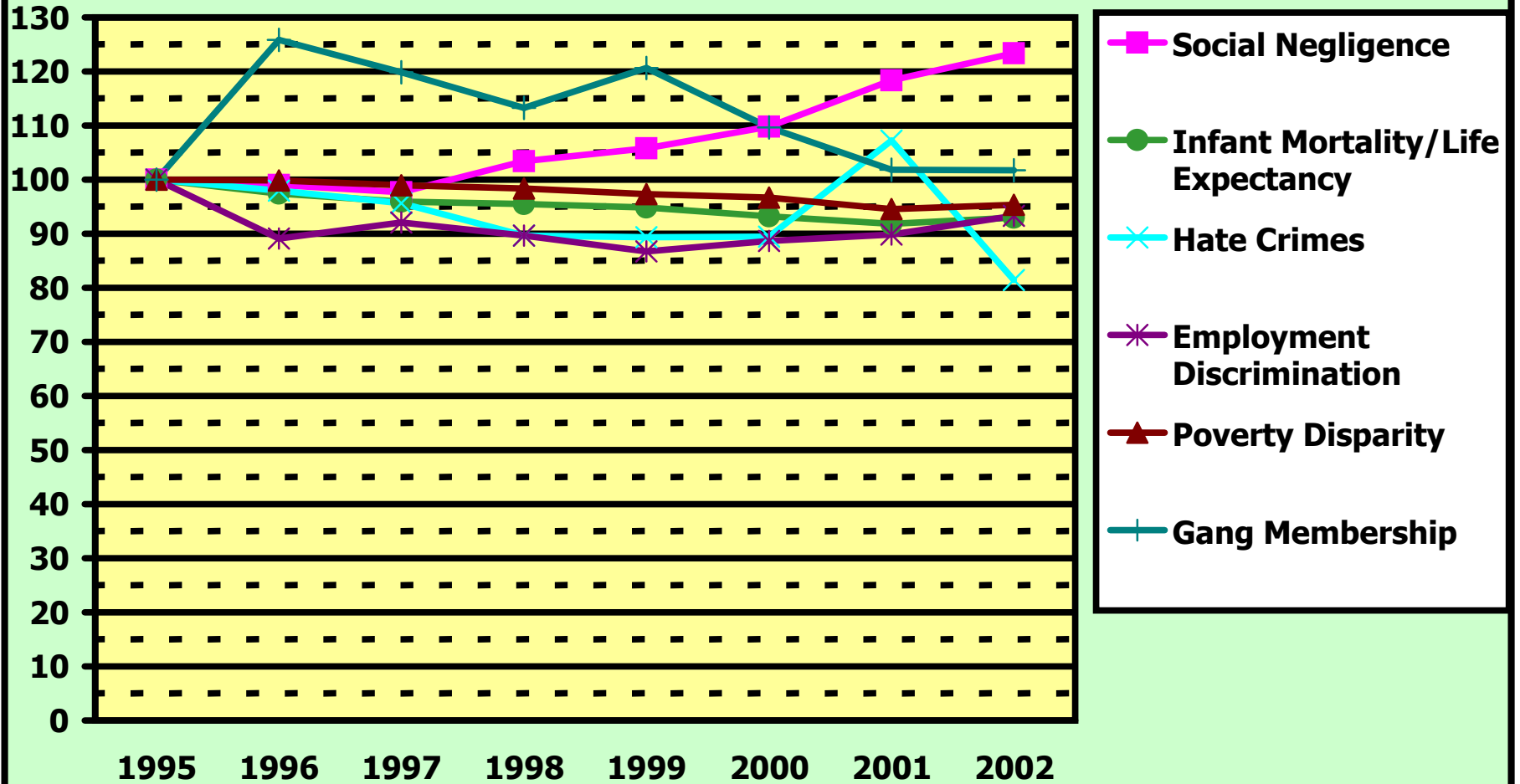
Institutional Variables: 1995-2002



Source: Manchester College Peace Studies Institute, Copyright 2004

National Index of Violence and Harm

Structural Variables: 1995-2002



Source: Manchester College Peace Studies Institute, Copyright 2004