

Factbook

Fall 2014



Manchester
University

Factbook Table of Contents

Completion Indicators

1. Graduates by Degree Completed 1.1
2. Undergraduate Graduate Placement 1.2

Enrollment Indicators

3. Total Enrollment 2.1
4. Composition of Undergraduate Enrollment (Brethren, minority, international, and gender) 2.2
5. Geographic Distribution of Undergraduate Enrollment..... 2.3
6. New Undergraduate Student Enrollment 2.4
7. Undergraduate Admissions Yield..... 2.5

Retention Indicators

8. Undergraduate Retention from First to Second Year 3.1

Cost and Financial Aid Indicators

9. Undergraduate Annual Costs..... 4.1
10. Undergraduate Tuition, Room, Board, Student and Technology Fees..... 4.2
11. Sources of Undergraduate Financial Aid Funds..... 4.3

Investment Indicators

12. Endowment..... 5.1

Financial Indicators

13. Net Assets / Financial Reserves	6.1
14. Notes Payable	6.2

College Advancement Indicators

15. Total Contributions.....	7.1
16. Sources of Contributions	7.2
17. The Manchester Fund.....	7.3
18. Alumni Contributors	7.4

Faculty Indicators

19. Undergraduate Faculty Size	8.1
20. Undergraduate Faculty by Rank	8.2
21. Undergraduate Faculty by Gender.....	8.3
22. Student / Faculty Ratio – Undergraduate Programs	8.4
23. Undergraduate Faculty Salaries	8.5

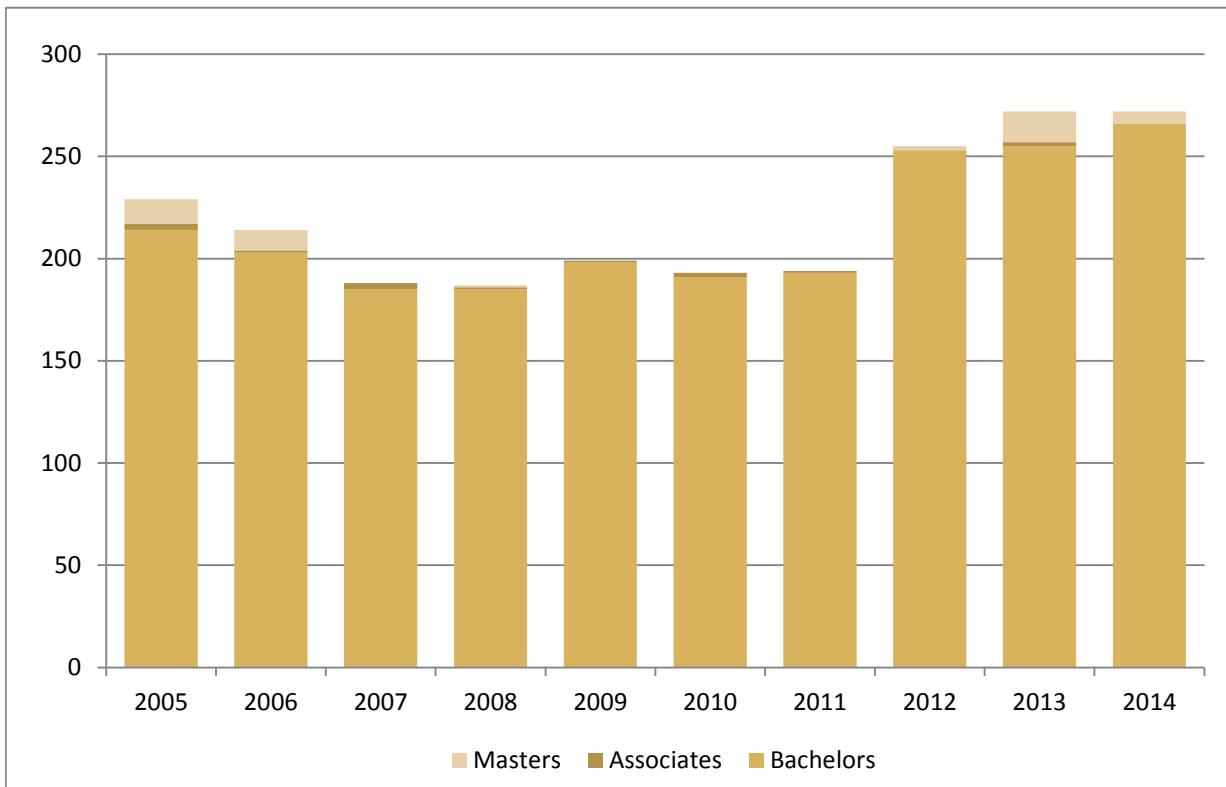
Academic Indicators

24. Undergraduate Study Abroad	9.1
--------------------------------------	-----

1.1 Graduates by Degree Completed

The number of graduates each year represents one point in the "pipeline" of student enrollments. Graduating class size is dependent on the size of each incoming class, retention, and transfers.

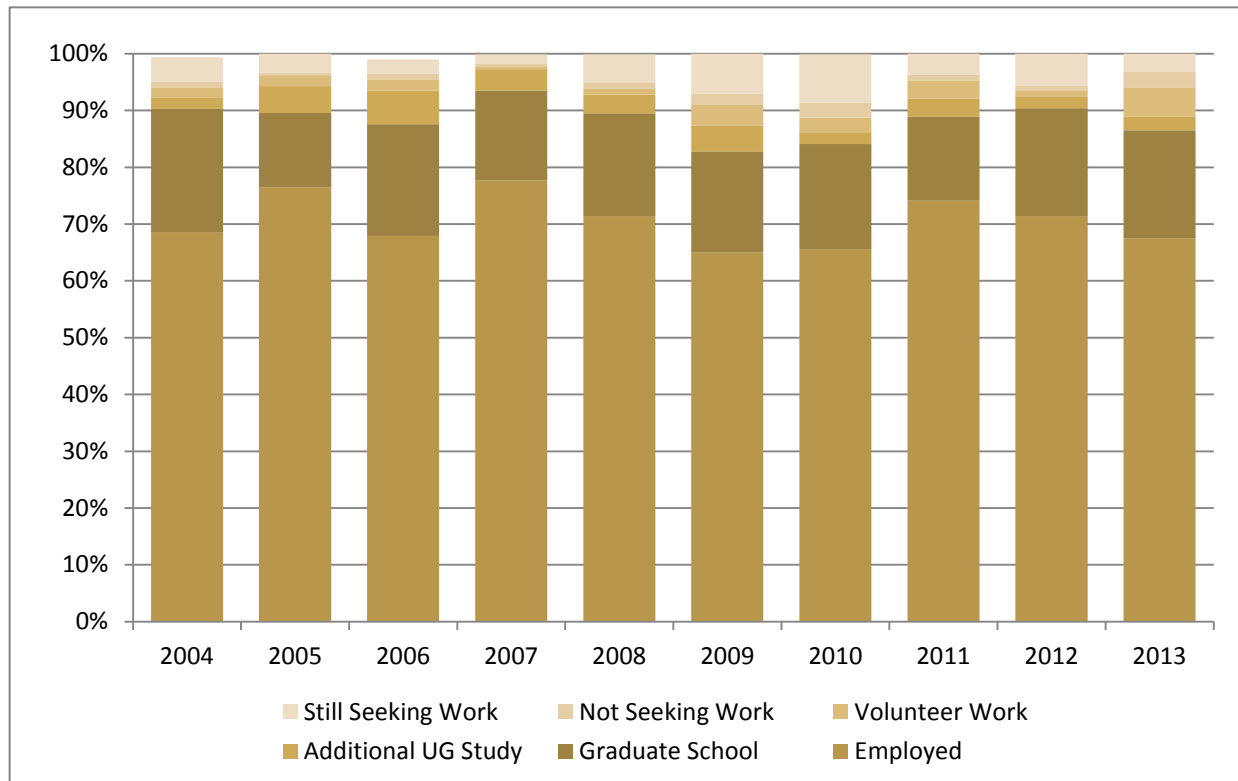
	Class of 2005	Class of 2006	Class of 2007	Class of 2008	Class of 2009	Class of 2010	Class of 2011	Class of 2012	Class of 2013	Class of 2014
Associates	3	1	3	1	1	2	1	0	2	0
Bachelors	214	203	185	185	198	191	193	253	255	266
Masters	12	10	0	1	0	0	0	2	15	6



1.2 Undergraduate Graduate Placement

Six months after graduation, students are surveyed to determine their post-secondary graduation plans. A 100% response rate in most years assures a clear look at our graduates six months after graduation. A vast majority of graduates are employed. Others enter graduate school, pursue further undergraduate work, work full time in volunteer services, and a few are not seeking employment. The "total employed" represents those not still looking for work.

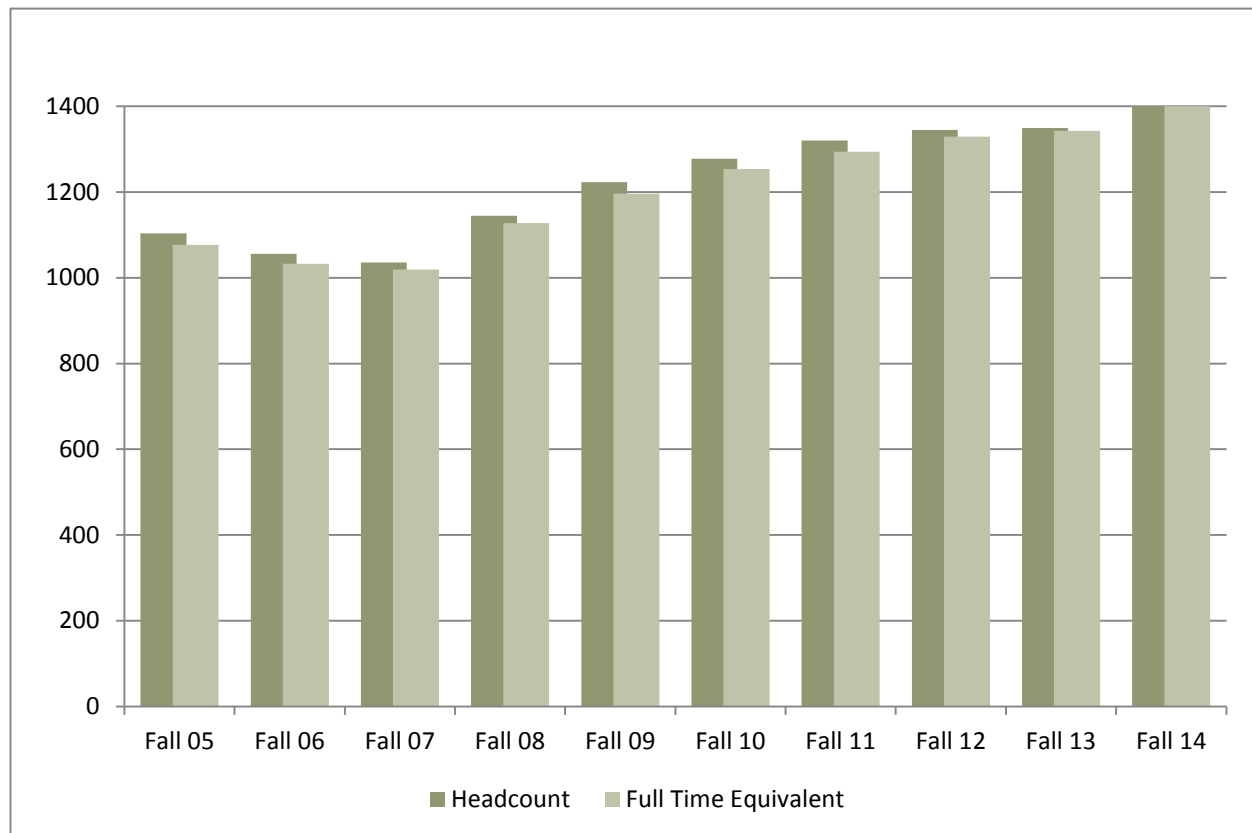
	2004	2005	2006	2007	2008	2009	2010	2011	2012	2013
Employed	68.6%	76.5%	67.9%	77.7%	71.4%	65.0%	65.6%	74.1%	71.4%	67.5%
Graduate School	21.7%	13.1%	19.7%	15.8%	18.1%	17.8%	18.5%	14.8%	19.0%	19.0%
Study	1.9%	4.7%	5.9%	3.8%	3.3%	4.6%	2.1%	3.2%	2.0%	2.4%
Volunteer Work	1.9%	1.9%	2.0%	0.5%	1.1%	3.6%	2.6%	3.2%	1.2%	5.2%
Not Seeking Work	1.0%	0.5%	1.0%	0.5%	1.1%	2.0%	2.6%	1.0%	0.8%	2.8%
Still Seeking Work	4.3%	3.3%	2.5%	1.6%	4.9%	7.1%	8.5%	3.7%	5.6%	3.2%
No Answer	0.5%	-	1.0%	0.5%	1.6%	0.5%		1.0%	4.6%	1.2%
Total Employed or in Further Study	95.2%	96.7%	97.5%	97.8%	93.9%	92.7%	91.3%	96.3%	94.3%	96.7%



2.1 Total Enrollment

Total enrollment, the number of individual students enrolled at Manchester each Fall, includes students who are full time and part time, graduate and undergraduate, degree seeking and those taking a single course for personal growth. Total headcount is a good indicator of enrollment health, but a very general one. It masks, for example, distribution between full time and part time enrollments. Full Time Equivalent, or FTE, enrollment converts units taken by part time students and adds them to full time enrollment. This standardizes part time enrollments into comparable units.

	Fall 05	Fall 06	Fall 07	Fall 08	Fall 09	Fall 10	Fall 11	Fall 12	Fall 13	Fall 14
Headcount	1104	1056	1036	1145	1223	1278	1320	1345	1349	1479
Undergraduate			1036	1145	1223	1274	1297	1257	1199	1257
Graduate						4	23	24	15	18
Professional								64	135	204
Full Time Equivalent (FTE)	1077	1033	1019	1127.6	1196	1253.8	1294.4	1329.0	1343	1460

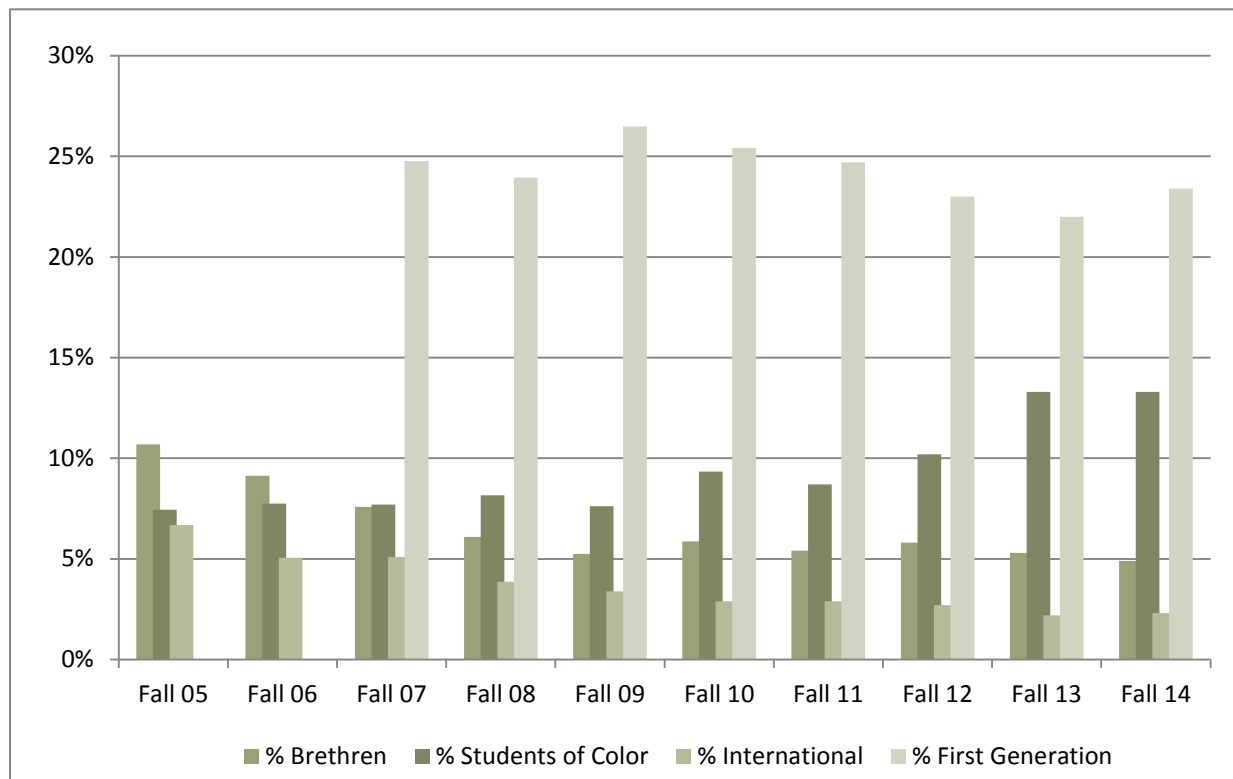


2.2 Composition of Undergraduate Enrollment

The University's enrollment is diverse in many respects. Religious background, gender, ethnicity, country of origin, and first generation status describe just a few of those diverse characteristics. Percentages are of full time undergraduate students enrolled.

Count	Fall 05	Fall 06	Fall 07	Fall 08	Fall 09	Fall 10	Fall 11	Fall 12	Fall 13	Fall 14
Brethren	112	92	76	68	62	73	69	73	63	60
Students of Color	78	78	77	91	90	116	112	128	160	164
International	70	51	51	43	40	36	37	34	26	28
First Generation			248	267	313	316	317	289	264	289
Men	490	490	499	549	584	594	614	609	568	596
Women	558	518	509	566	598	649	683	648	631	637

Percent of Total	Fall 05	Fall 06	Fall 07	Fall 08	Fall 09	Fall 10	Fall 11	Fall 12	Fall 13	Fall 14
% Brethren	10.7%	9.1%	7.6%	6.1%	5.2%	5.9%	5.4%	5.8%	5.3%	4.9%
% Students of Color	7.4%	7.7%	7.7%	8.2%	7.6%	9.3%	8.7%	10.2%	13.3%	13.3%
% International	6.7%	5.1%	5.1%	3.9%	3.4%	2.9%	2.9%	2.7%	2.2%	2.3%
% First Generation			24.8%	23.9%	26.5%	25%	25%	23%	22%	23%
% Men	46.8%	48.6%	49.5%	49.2%	49.4%	47.8%	47.1%	48.4%	47.4%	48.3%
% Women	0.0%	51.4%	50.5%	50.8%	50.6%	52.2%	52.9%	51.6%	52.6%	51.7%



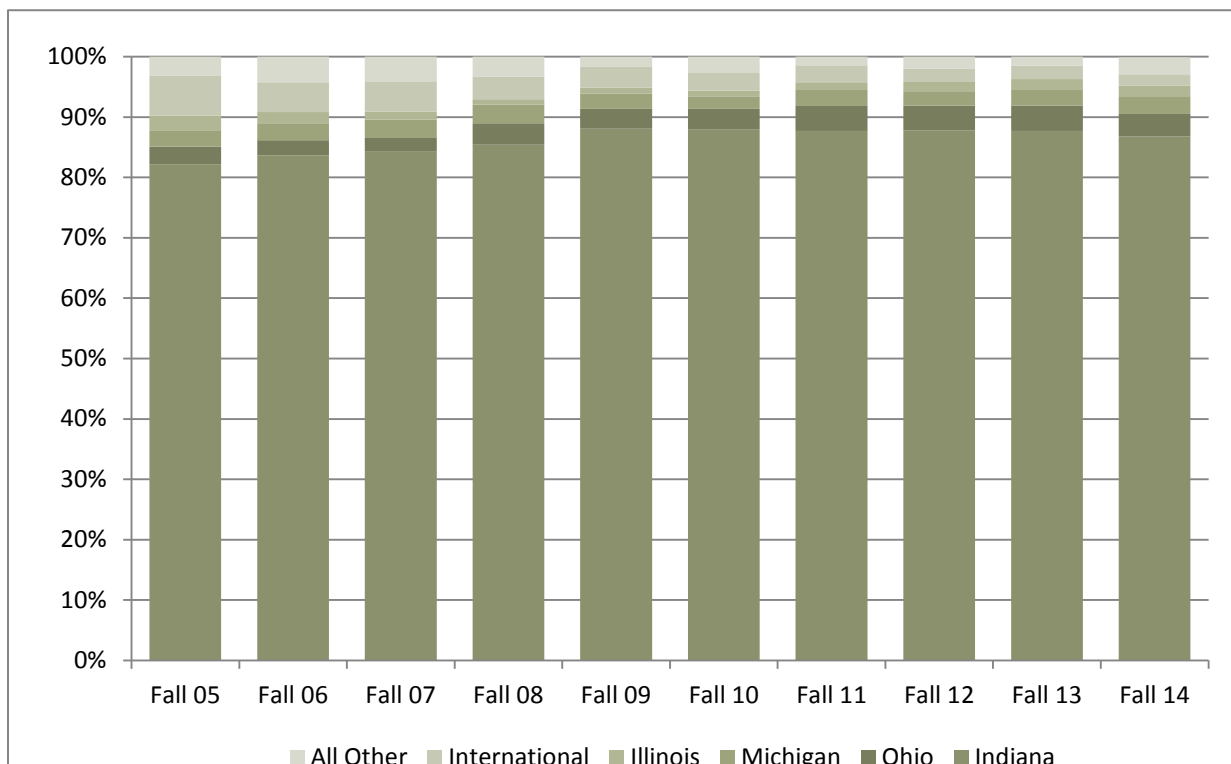
2.3 Geographic Distribution of Undergraduate Enrollment

State count includes US residencies of international students with dual citizenship.

Count	Fall 05	Fall 06	Fall 07	Fall 08	Fall 09	Fall 10	Fall 11	Fall 12	Fall 13	Fall 14
Indiana	876	865	863	967	1041	1100	1158	1103	1052	1070
Ohio	31	26	22	40	39	43	54	51	50	46
Michigan	28	29	31	35	30	26	35	30	31	35
Illinois	27	19	14	10	11	12	17	20	21	24
International	70	51	51	43	41	36	37	27	26	24
All Other	34	44	42	37	20	34	19	26	19	34

Percent of Total	Fall 05	Fall 06	Fall 07	Fall 08	Fall 09	Fall 10	Fall 11	Fall 12	Fall 13	Fall 14
Indiana	82.2%	83.7%	84.4%	85.4%	88.1%	87.9%	87.7%	87.8%	87.7%	86.8%
Ohio	2.9%	2.5%	2.2%	3.5%	3.3%	3.4%	4.1%	4.1%	4.2%	3.7%
Michigan	2.6%	2.8%	3.0%	3.1%	2.5%	2.1%	2.7%	2.4%	2.6%	2.8%
Illinois	2.5%	1.8%	1.4%	0.9%	0.9%	1.0%	1.3%	1.6%	1.8%	1.9%
International	6.6%	4.9%	5.0%	3.8%	3.5%	2.9%	2.8%	2.1%	2.2%	1.9%
All Other	3.2%	4.3%	4.1%	3.3%	1.7%	2.7%	1.4%	2.1%	1.6%	2.8%

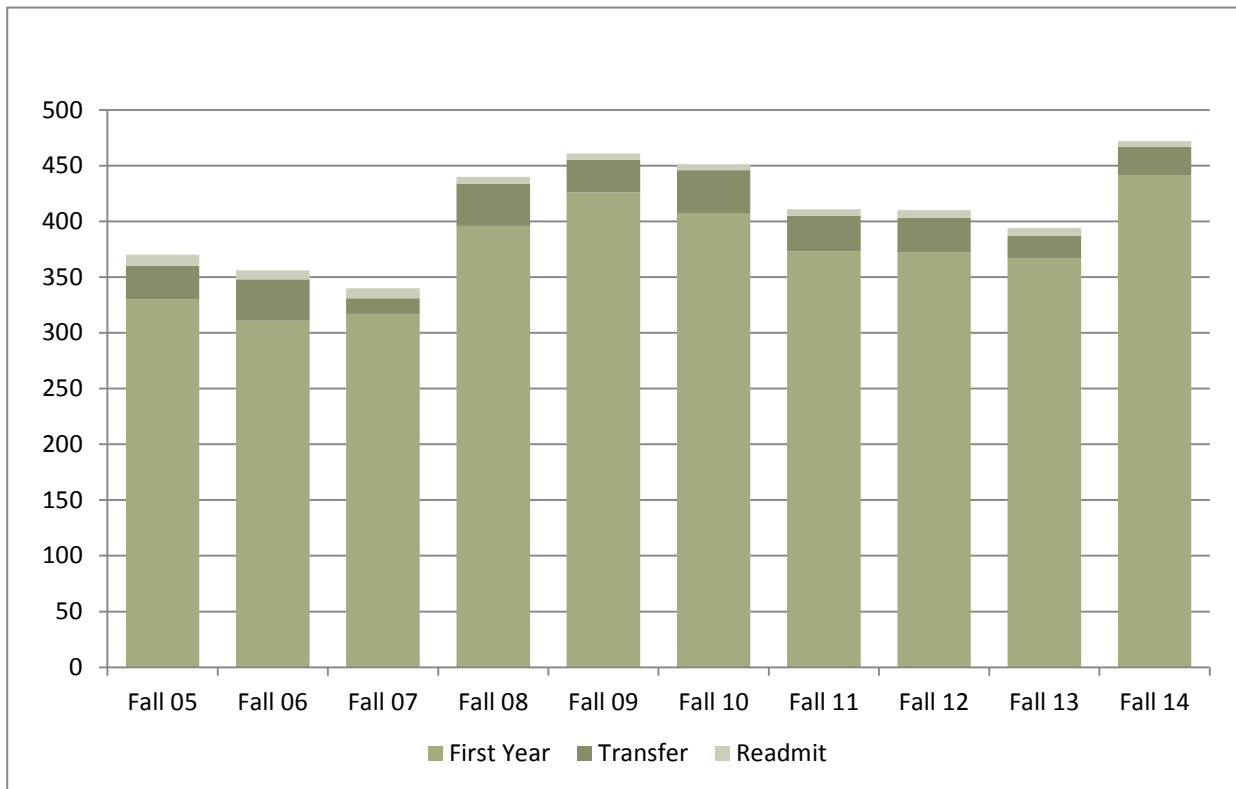
Count	Fall 05	Fall 06	Fall 07	Fall 08	Fall 09	Fall 10	Fall 11	Fall 12	Fall 13	Fall 14
States	25	28	24	25	21	22	24	21	20	25
Countries	30	26	23	25	20	20	24	23	19	17



2.4 New Undergraduate Student Enrollment

First year students (the traditional "incoming class") are enrolling full time in college for the first time. Transfers come with previous college experience at another institution. Readmits are returning undergraduate students who were previously enrolled at Manchester University but have been out of college for a semester or more.

	Fall 05	Fall 06	Fall 07	Fall 08	Fall 09	Fall 10	Fall 11	Fall 12	Fall 13	Fall 14
First Year	330	311	317	396	426	407	373	372	367	441
Transfer	30	37	14	38	29	39	32	31	20	26
Readmit	10	8	9	6	6	5	6	7	7	5
Total New	370	356	340	440	461	451	411	410	394	472



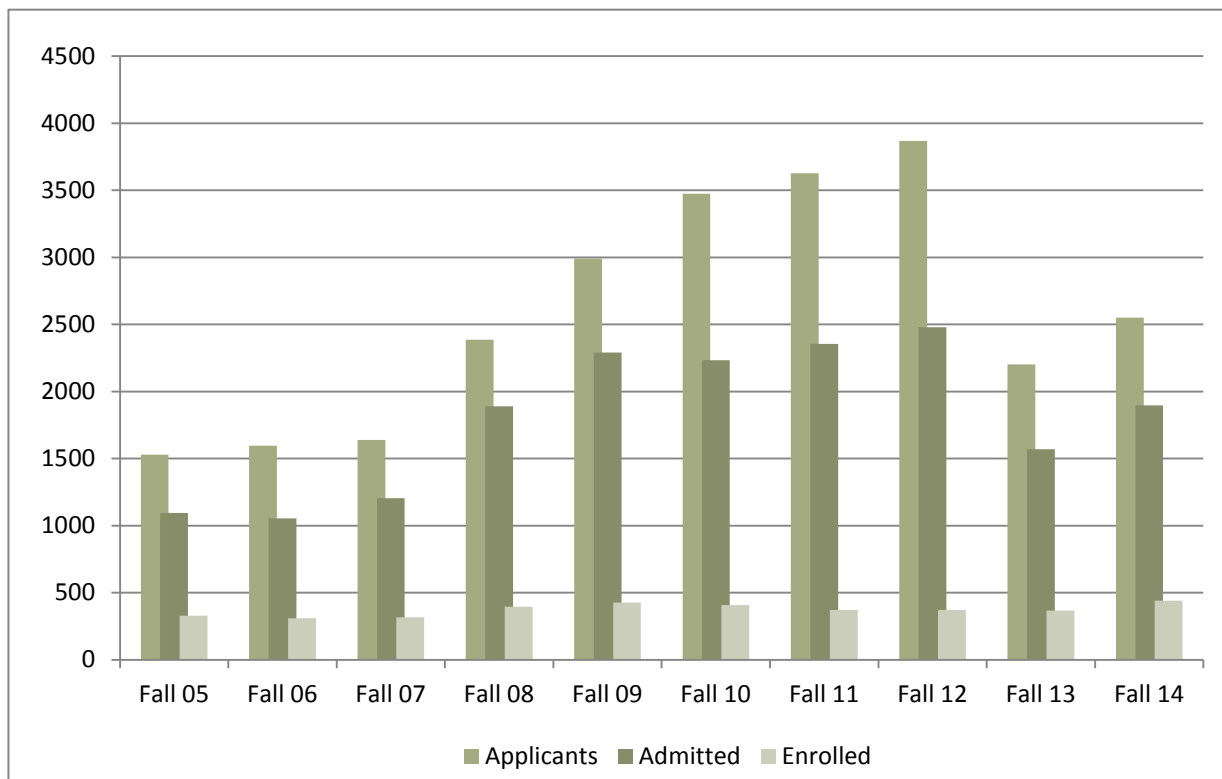
2.5 Undergraduate Admissions Yield

The set of progressively smaller numbers of inquiries, applicants, admitted students, and enrolled students is referred to as the "admissions funnel," and the percentage of each group that moves on to the next stage in the funnel is called the "yield."

The quality of an inquiry pool is a function of both the number in the pool and their interest in Manchester. The percentage of applicants who are admitted depends in part on the quality of the applicants in the pool and the number who complete their applications. Weak students are not encouraged to complete the application process. Finally, the number enrolling is dependent on the competitiveness of our financial aid packages and applicant commitment to Manchester.

Count	Fall 05	Fall 06	Fall 07	Fall 08	Fall 09	Fall 10	Fall 11	Fall 12	Fall 13	Fall 14
Inquiries	15,644	13,979	12,952	29,318	40,627	48,152	45,000	56,000	56,000	60,000
Applicants	1,529	1,595	1,639	2,385	2,990	3,473	3,626	3,867	2,203	2,551
Admitted	1,095	1,054	1,206	1,890	2,291	2,234	2,354	2,479	1,570	1,896
Enrolled	330	311	317	396	426	407	373	372	367	441

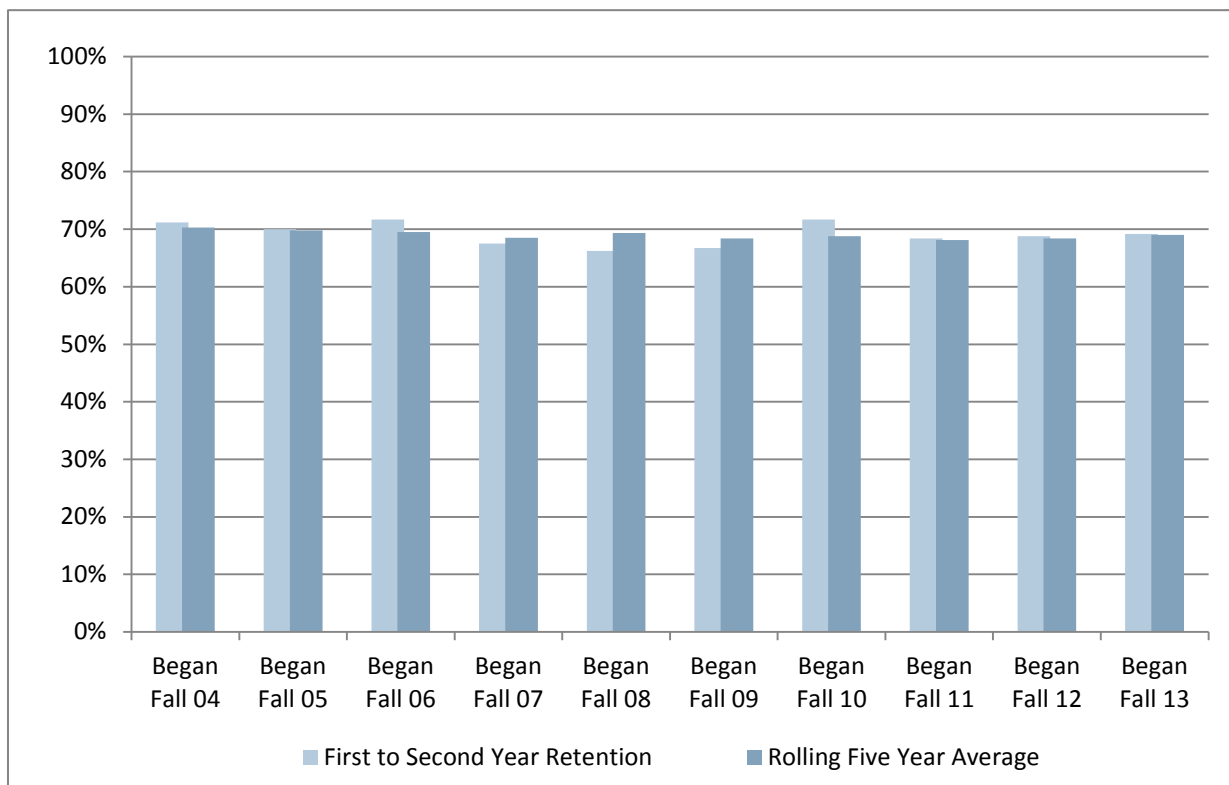
Yield	Fall 05	Fall 06	Fall 07	Fall 08	Fall 09	Fall 10	Fall 11	Fall 12	Fall 13	Fall 14
% Applied	9.8%	11.4%	12.7%	8.1%	7.4%	7.2%	8.1%	6.9%	3.9%	4.3%
% Admitted	71.6%	66.1%	73.6%	79.2%	76.6%	64.3%	64.9%	64.1%	71.3%	74.3%
% Enrolled	30.1%	29.5%	26.3%	21.0%	18.6%	18.2%	15.8%	15.0%	23.4%	23.3%



3.1 Undergraduate Retention from First to Second Year

Retention from first to second year is a function of many factors. Most important are academic preparation, satisfaction with programs and services, fit with the University, and individual financial circumstances. Manchester's retention of students from first to second year is typical of liberal arts colleges like us and the reasons students give for leaving are common to other schools as well.

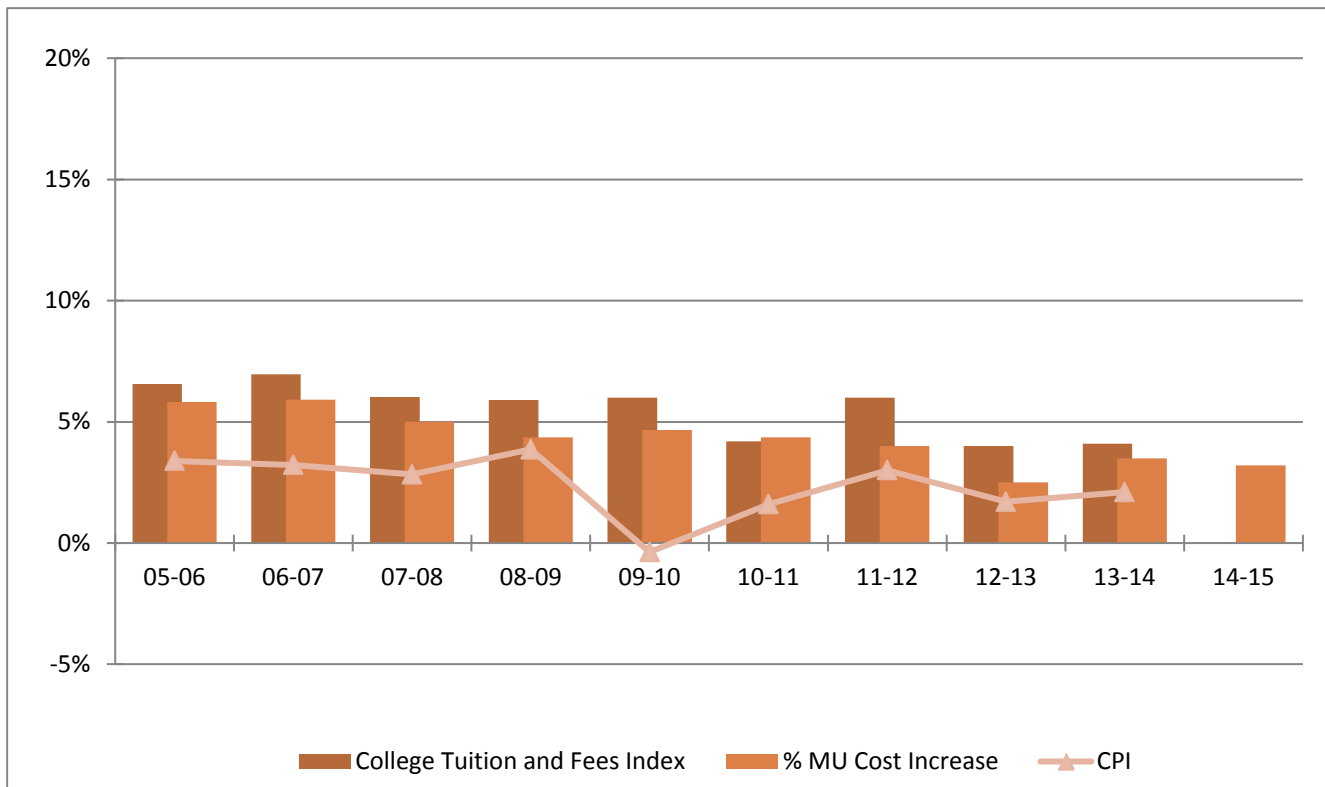
	Began Fall 04	Began Fall 05	Began Fall 06	Began Fall 07	Began Fall 08	Began Fall 09	Began Fall 10	Began Fall 11	Began Fall 12	Began Fall 13
First to Second Year Retention	71.2%	70.0%	71.7%	67.5%	66.2%	66.7%	71.7%	68.4%	68.8%	69.2%
Rolling Five Year Average	70.3%	69.8%	69.5%	68.5%	69.3%	68.4%	68.8%	68.1%	68.4%	69.0%



4.1 Undergraduate Annual Costs

Total basic costs are the annual charges for tuition, fees, East Hall room, and board. "CPI" is the Consumer Price Index calculated by the Bureau of Labor Statistics. The "College Tuition and Fees Index" is the Bureau's calculation of changes in pricing at U.S. undergraduate and graduate institutions. December index numbers are used to calculate annual changes for this Factbook.

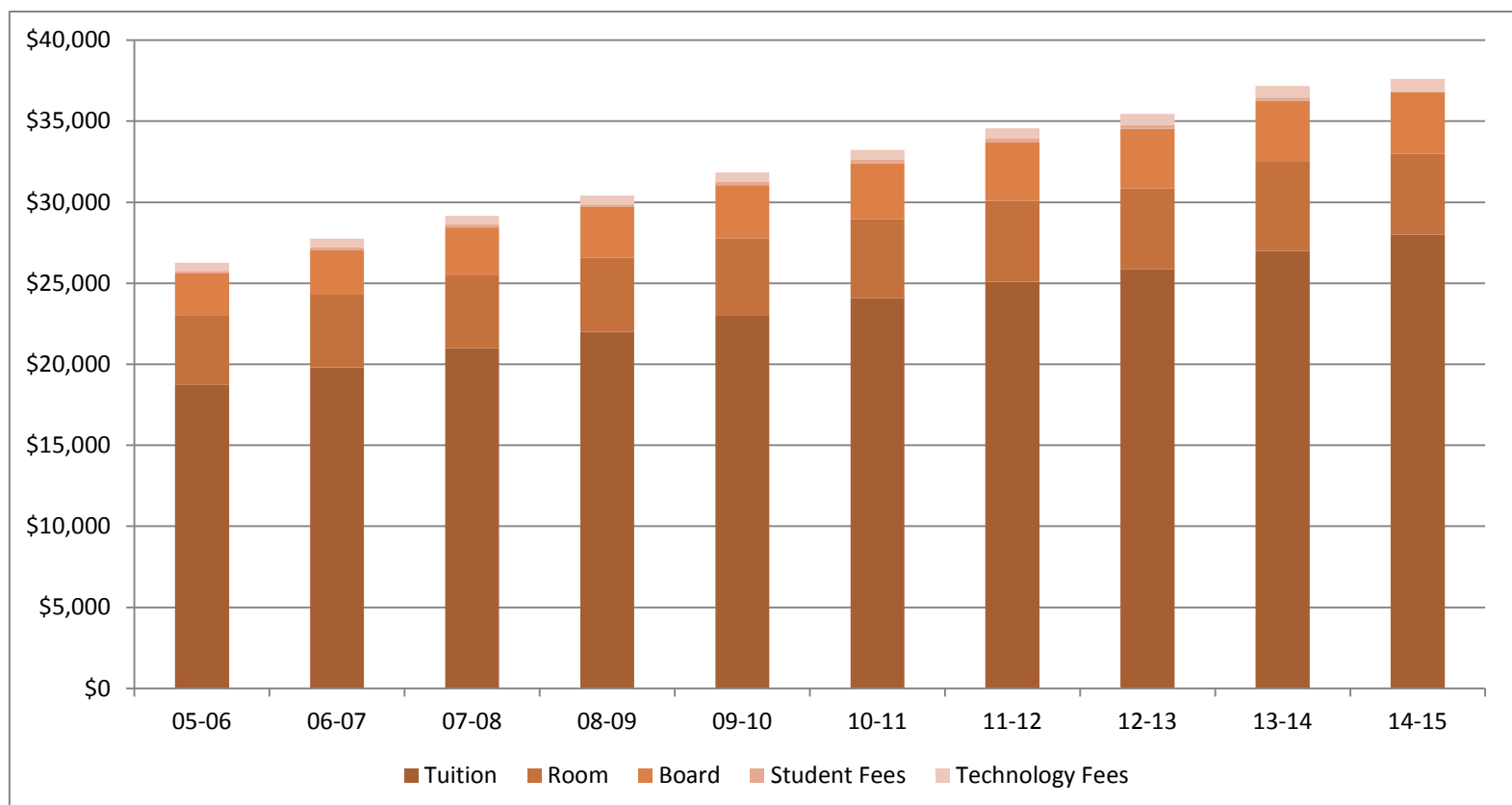
	05-06	06-07	07-08	08-09	09-10	10-11	11-12	12-13	13-14	14-15
Total Cost	\$26,270	\$27,760	\$29,150	\$30,420	\$31,840	\$33,230	\$34,570	\$35,446	\$36,670	\$37,840
% MU Cost Increase	5.8%	5.9%	5.0%	4.4%	4.7%	4.4%	4.0%	2.5%	3.5%	3.2%
CPI	3.4%	3.2%	2.8%	3.9%	-0.4%	1.6%	3.0%	1.7%	2.1%	
College Tuition and Fees Index	6.6%	7.0%	6.0%	5.9%	6.0%	4.2%	6.0%	4.0%	4.1%	



4.2 Undergraduate Tuition, Room, Board, Student and Technology Fees

This table reflects our "list price" which reflects gross tuition, fees, room, and board. This full price is rarely, if ever, paid by students as most receive substantial scholarships and/or grants during the admissions process (See 4.5).

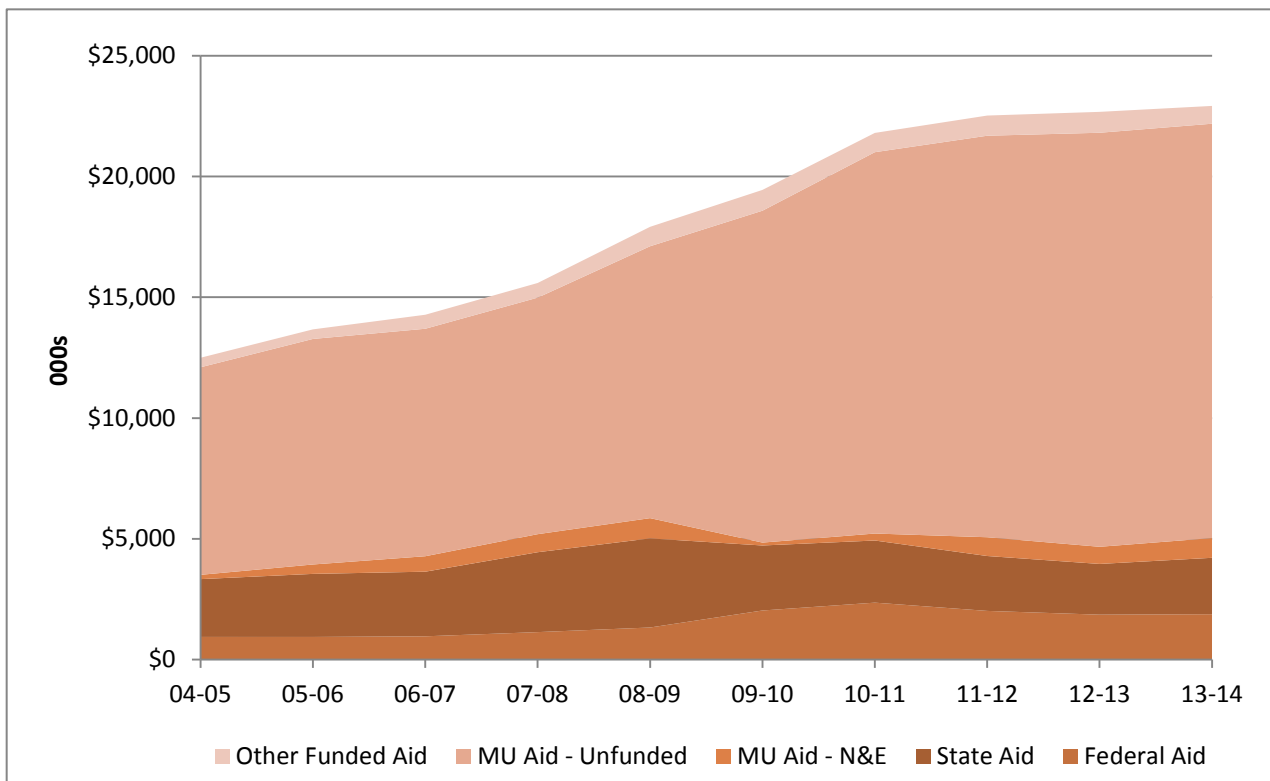
	05-06	06-07	07-08	08-09	09-10	10-11	11-12	12-13	13-14	14-15
Tuition	\$18,750	\$19,800	\$21,000	\$22,000	\$23,000	\$24,100	\$25,100	\$25,850	\$27,000	\$28,000
Room	\$4,250	\$4,500	\$4,500	\$4,600	\$4,750	\$4,850	\$5,000	\$5,000	\$5,500	\$5,000
Board	\$2,600	\$2,760	\$2,950	\$3,100	\$3,300	\$3,460	\$3,600	\$3,700	\$3,750	\$3,800
Student Fees	\$170	\$170	\$170	\$170	\$220	\$220	\$220	\$220	\$220	\$220
Technology Fees	\$500	\$530	\$530	\$550	\$570	\$600	\$650	\$676	\$700	\$820
Total	\$26,270	\$27,760	\$29,150	\$30,420	\$31,840	\$33,230	\$34,570	\$35,446	\$37,170	\$37,840



4.3 Sources of Undergraduate Financial Aid Funds

Manchester contributes a larger and larger portion of students' financial aid, both in dollars and as a percentage of total aid awarded. State and Federal aid totals vary with enrollment and, for state aid particularly, with legislated allocation levels. Manchester named and endowed aid (N&E) comes from restricted accounts and gifts. Unfunded Manchester aid comes from operating revenues.

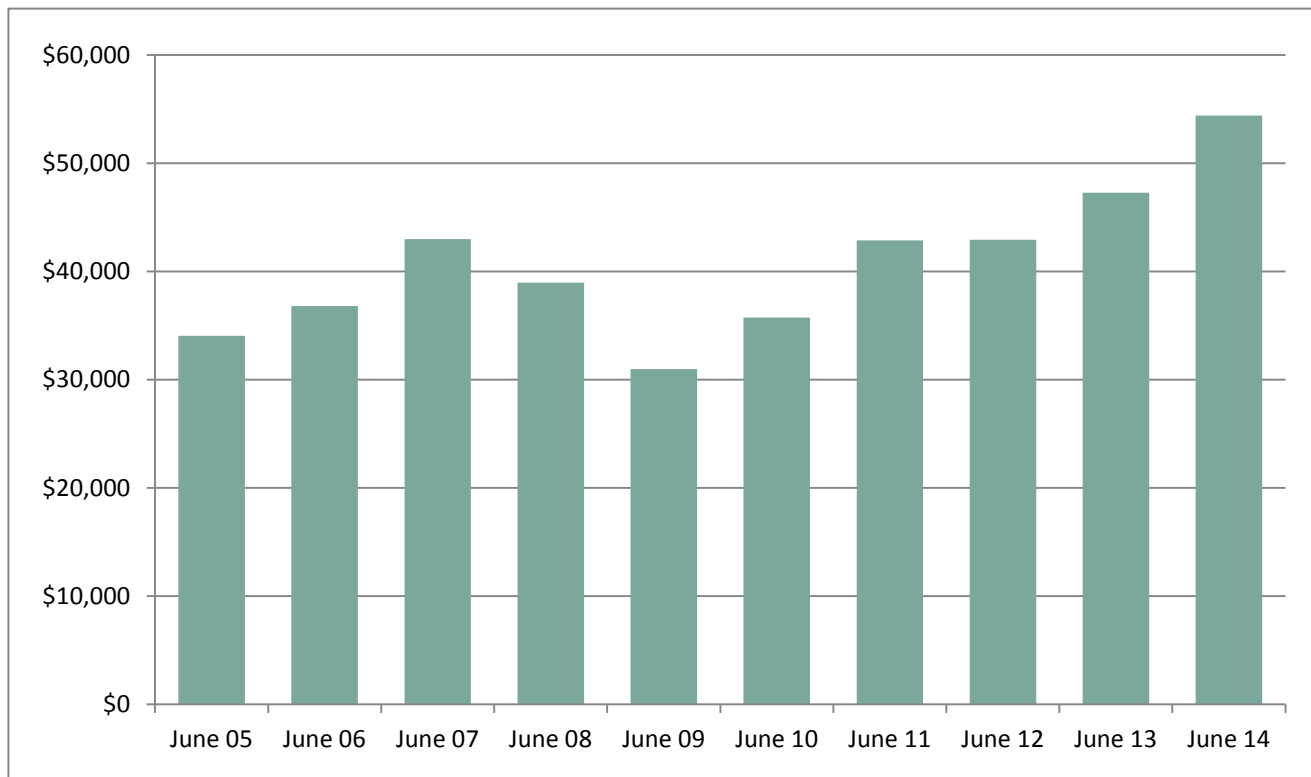
	04-05	05-06	06-07	07-08	08-09	09-10	10-11	11-12	12-13	13-14
Federal Aid	\$937	\$936	\$962	\$1,136	\$1,327	\$2,031	\$2,356	\$2,014	\$1,858	\$1,878
State Aid	\$2,393	\$2,611	\$2,676	\$3,308	\$3,689	\$2,692	\$2,573	\$2,273	\$2,101	\$2,335
MU Aid - N&E	\$178	\$389	\$640	\$747	\$839	\$120	\$289	\$777	\$710	\$817
MU Aid - Unfunded	\$8,594	\$9,339	\$9,419	\$9,794	\$11,258	\$13,742	\$15,790	\$16,626	\$17,144	\$17,157
Other Funded Aid	\$394	\$396	\$580	\$607	\$804	\$861	\$798	\$835	\$865	\$737
Total Aid (000s)	\$12,496	\$13,671	\$14,277	\$15,592	\$17,917	\$19,446	\$21,806	\$22,525	\$22,678	\$22,924



5.1 Endowment

Endowment includes all permanently restricted and Board of Trustees-designated (quasi) endowment funds, reported at market value. All figures are as of June 30 each year. Endowment per student is per full time equivalent.

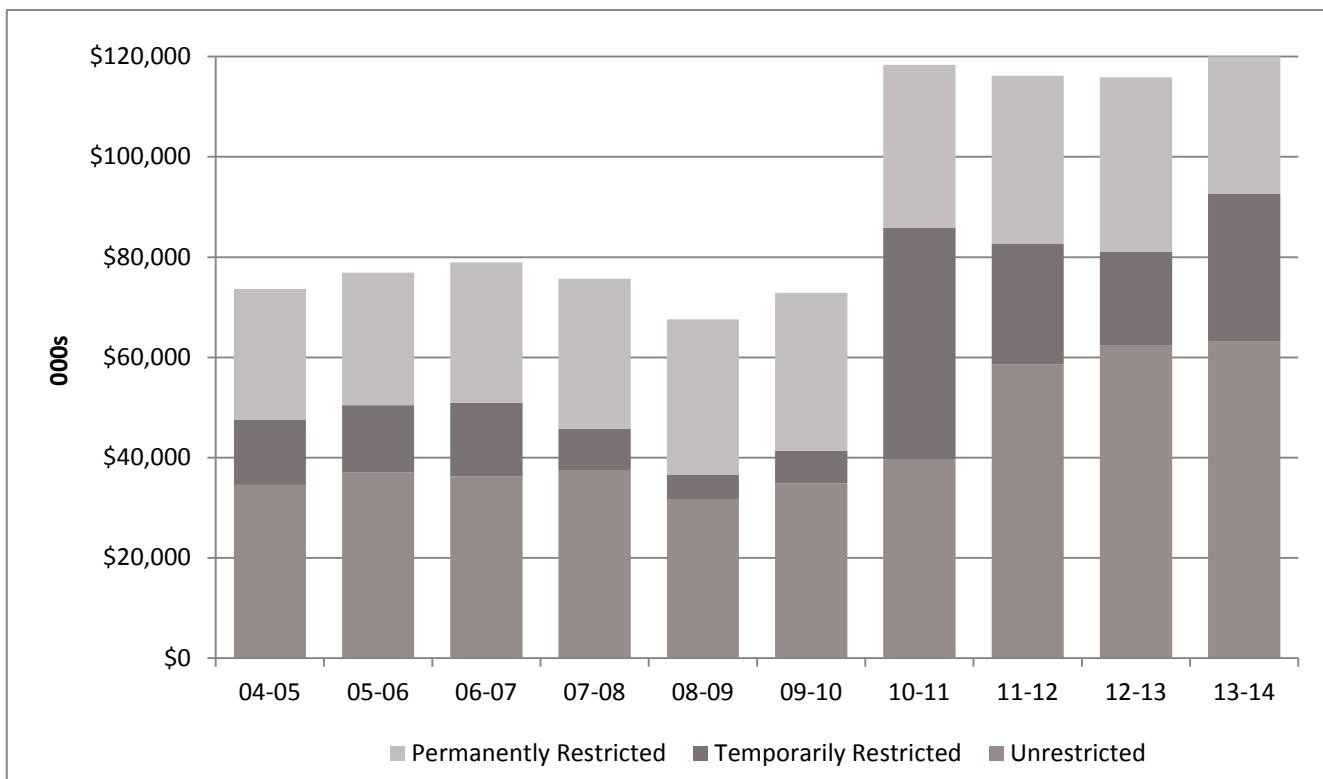
	June 05	June 06	June 07	June 08	June 09	June 10	June 11	June 12	June 13	June 14
Endowment (000s)	\$34,052	\$36,801	\$42,982	\$38,987	\$30,998	\$35,747	\$42,884	\$42,936	\$47,294	\$54,426
Endowment per FTE	\$31,617	\$35,625	\$42,181	\$34,575	\$25,918	\$30,230	\$34,198	\$33,171	\$38,048	\$45,583



6.1 Net Assets / Financial Reserves

Financial reserves are those funds most readily available to help the University through tight financial times. These resources have no donor or other restrictions and may be spent at the Board's direction. Reserves are described as net assets in three forms: unrestricted, temporarily restricted, and permanently restricted.

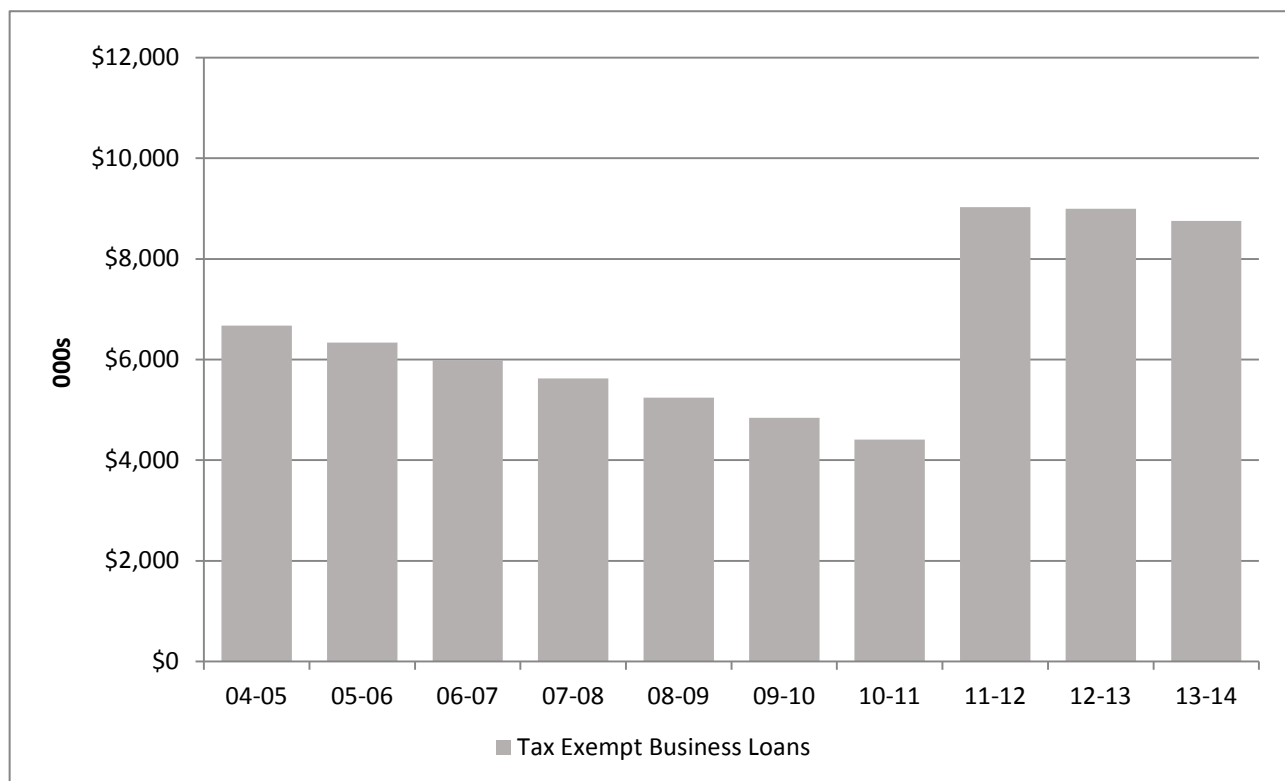
	04-05	05-06	06-07	07-08	08-09	09-10	10-11	11-12	12-13	13-14
Unrestricted	\$34,584	\$37,068	\$36,238	\$37,359	\$31,741	\$34,895	\$39,723	\$58,611	\$62,493	\$63,243
Temporarily Restricted	\$13,015	\$13,423	\$14,661	\$8,407	\$4,788	\$6,483	\$46,113	\$24,115	\$18,552	\$29,437
Permanently Restricted	\$26,038	\$26,391	\$28,077	\$29,929	\$31,062	\$31,500	\$32,503	\$33,483	\$34,843	\$35,694



6.2 Notes Payable

Notes Payable is the total of money borrowed. Payments of principal and interest are required regardless of other financial obligations or the status of the current budget. The University maintained a debt level until 1991-92 when bonds totaling \$8.5 million were issued to finance construction of Helman and Oakwood Halls. The bonds were refinanced for \$7.715 million in April 2002. In January of 2012 the University added \$5.0 million in debt to complete the Academic Building remodel. In March 2013, the University issued tax exempt bonds totaling \$9 million to refinance both the 2002 bonds and the \$5 million in debt for the Academic Center remodel.

Notes Payable	04-05	05-06	06-07	07-08	08-09	09-10	10-11	11-12	12-13	13-14
Tax Exempt Business Loans	\$6,674	\$6,340	\$5,990	\$5,626	\$5,241	\$4,842	\$4,412	\$9,030	\$9,000	\$8,758

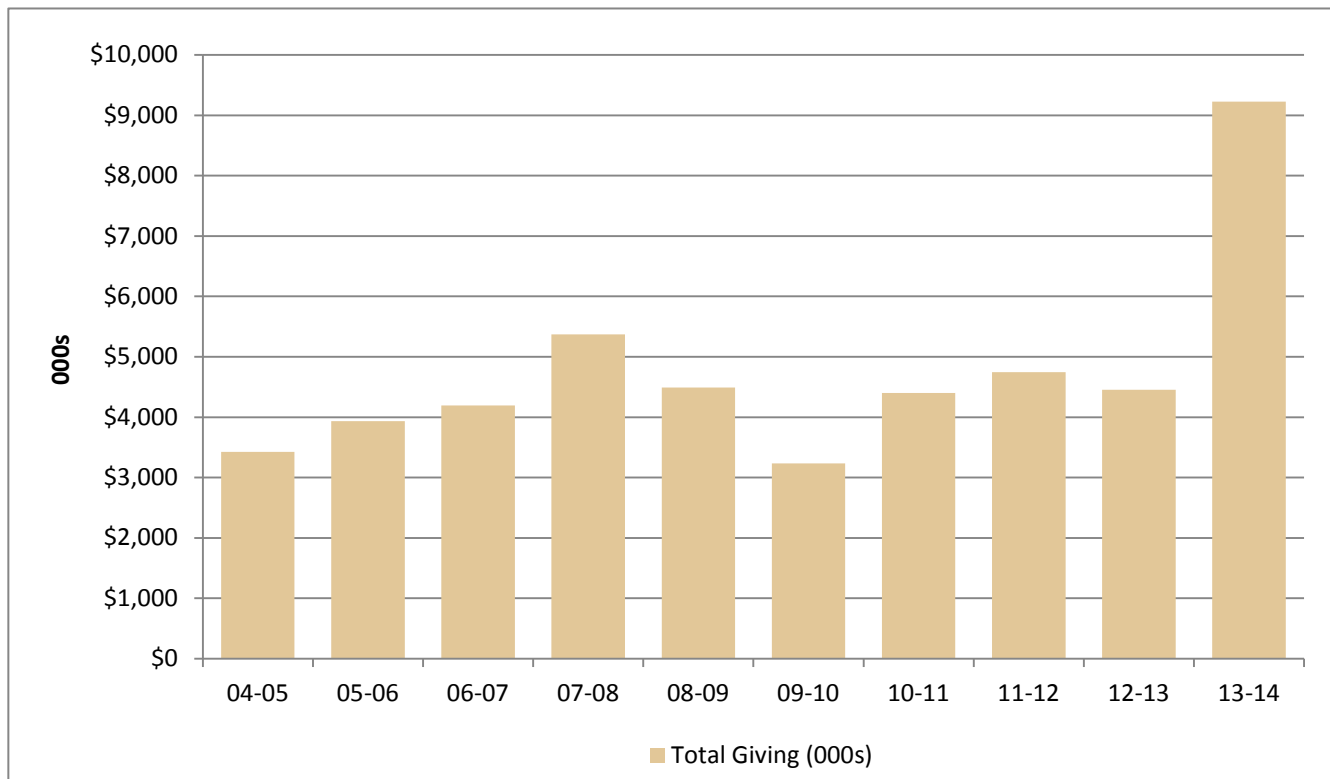


7.1 Total Contributions

Total giving reflects gifts and grants received in support of educational and general operations, special projects, restricted funds, and capital projects. Contributions are received from individuals, churches, corporations, and foundations. A \$35.0M Lilly Endowment grant was received in December 2010. Governmental contracts are not included in gifts and grants. The Next Step! campaign ended Dec. 31, 2005. The Board of Trustees Lilly Endowment challenge ended Dec. 31, 2002; the Lilly Endowment Special Initiative to Strengthen Philanthropy ended on Dec. 31, 2004; and Phase II of the Special Initiative ended on Dec. 31, 2006. *Students First! A Campaign for Manchester* began July 1, 2007.

	04-05	05-06	06-07	07-08	08-09	09-10	10-11	11-12	12-13	13-14
Total Giving (000s)	\$3,426	\$3,932	\$4,192	\$5,369	\$4,493	\$3,234	\$4,403	\$4,748	\$4,455	\$9,224

(figures exclude awards from Lilly Endowment, Inc.)

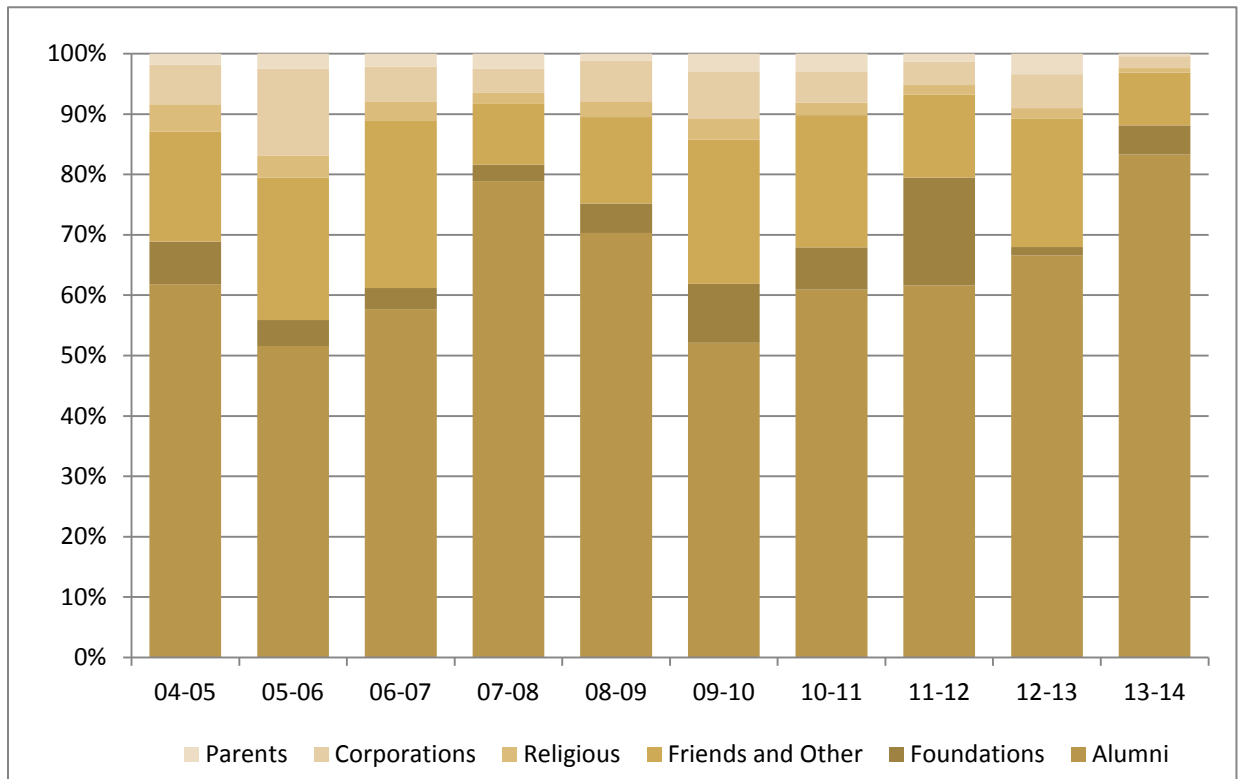


7.2 Sources of Contributions

Manchester University relies heavily on the gifts it receives from individual donors, particularly our alumni.

	04-05	05-06	06-07	07-08	08-09	09-10	10-11	11-12	12-13	13-14
Alumni	61.8%	51.6%	57.7%	78.9%	70.3%	52.1%	60.9%	61.6%	66.6%	83.3%
Foundations	7.1%	4.3%	3.5%	2.7%	4.9%	9.8%	7.0%	17.9%	1.4%	4.8%
Friends and Other	18.2%	23.6%	27.8%	10.2%	14.3%	23.9%	21.9%	13.7%	21.3%	8.8%
Religious	4.5%	3.6%	3.1%	1.8%	2.5%	3.4%	2.1%	1.6%	1.7%	0.7%
Corporations	6.6%	14.4%	5.8%	3.9%	6.9%	7.8%	5.2%	3.9%	5.6%	2.0%
Parents	1.8%	2.5%	2.1%	2.5%	1.1%	3.0%	2.9%	1.3%	3.4%	0.4%

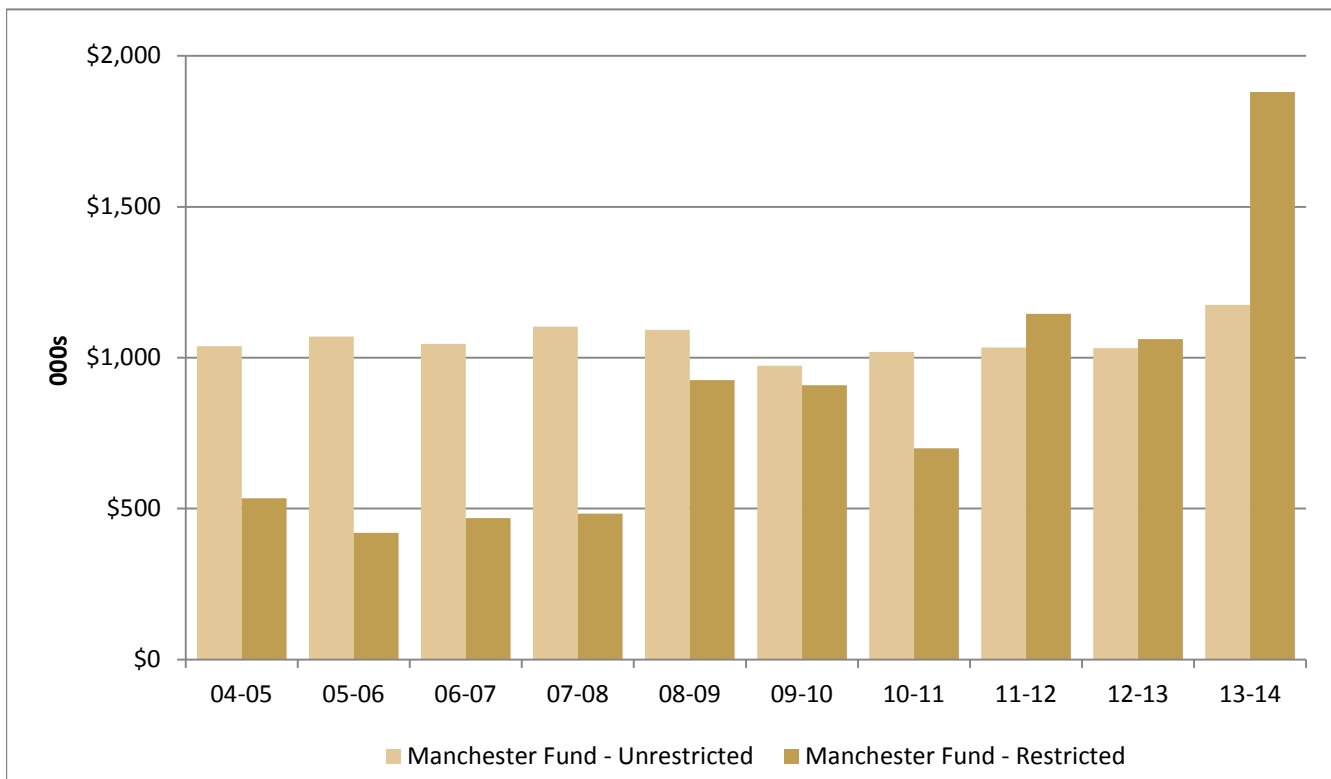
(figures exclude awards from Lilly Endowment, Inc.)



7.3 The Manchester Fund

The Manchester Fund is charged with raising annual support for the University's education and general budget. Donors are encouraged to give either unrestricted gifts or gifts restricted for current fund operations. The Manchester Fund goal was reduced in 2000-01 when estate gifts were directed to the Board and Vision Fund rather than treated as Manchester Fund gifts. 2008-09 restricted gifts include \$375,000 from Lilly Endowment, Inc. for the Intern Sustaining Grant. 2013-14 includes \$1 million restricted gift from Lilly Endowment, Inc.

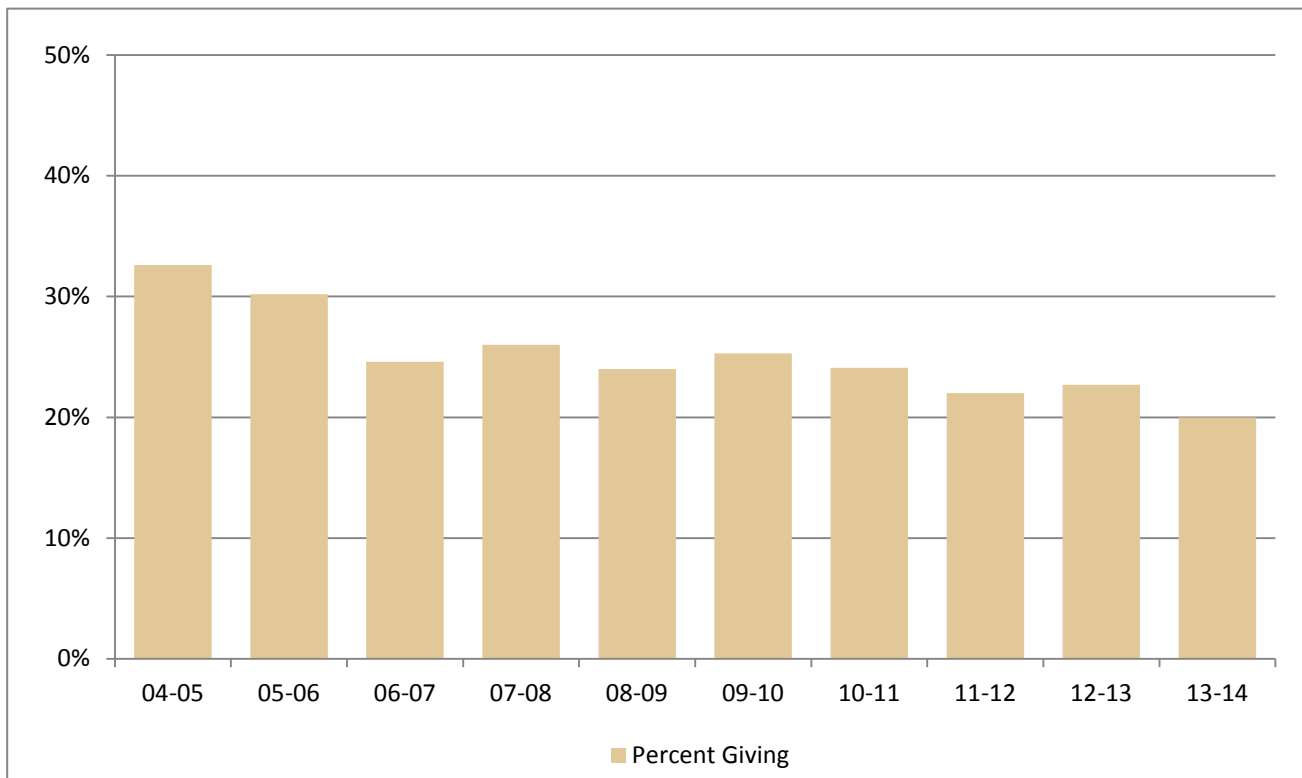
	04-05	05-06	06-07	07-08	08-09	09-10	10-11	11-12	12-13	13-14
Manchester Fund - Unrestricted	\$1,038	\$1,070	\$1,046	\$1,103	\$1,092	\$974	\$1,019	\$1,034	\$1,032	\$1,175
Manchester Fund - Restricted	\$534	\$420	\$469	\$483	\$926	\$909	\$700	\$1,145	\$1,061	\$1,880
Total (000s)	\$1,572	\$1,490	\$1,515	\$1,586	\$2,018	\$1,883	\$1,719	\$2,179	\$2,093	\$3,055



7.4 Alumni Contributors

The percentage of alumni participation is based on the total number of active alumni contacted. Alumni are defined as anyone who attended Manchester University a full year. In 2006-07, the Office of University Advancement contacted 2,000 individuals who had never been solicited before, significantly reducing the percentage of alumni giving despite the fact that a comparable number of alumni contributed.

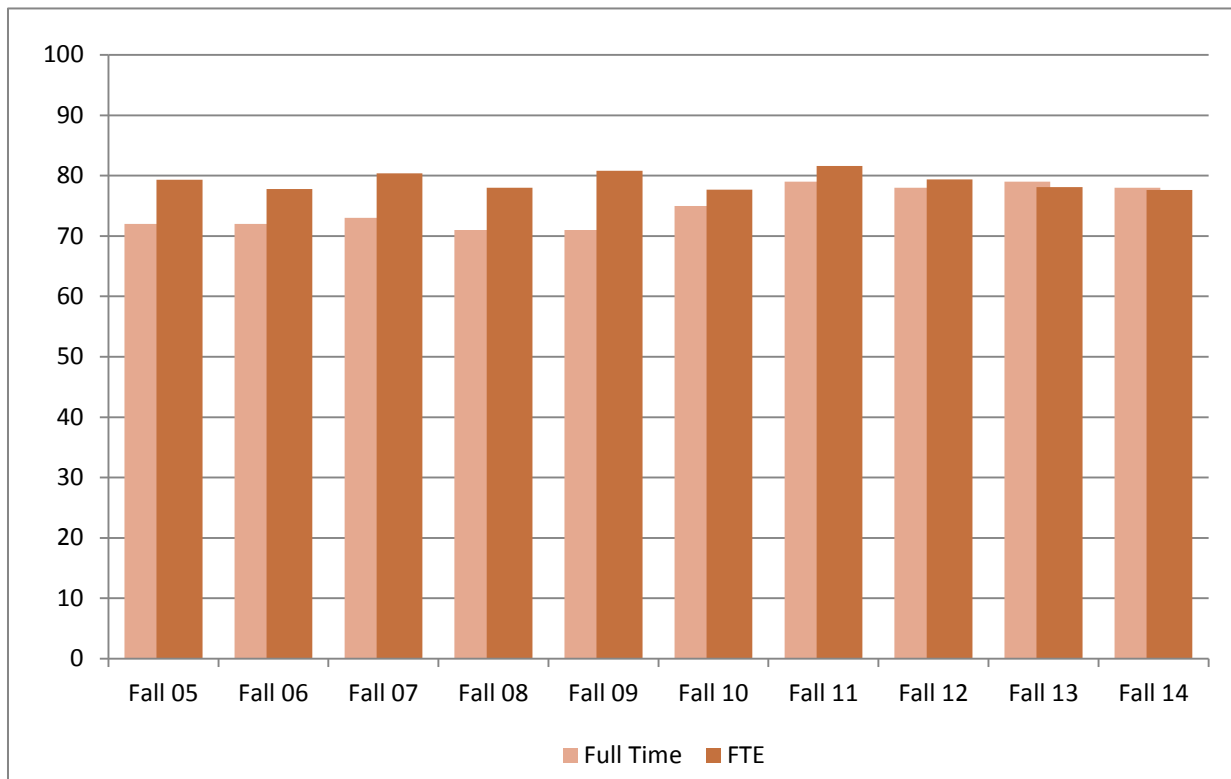
	04-05	05-06	06-07	07-08	08-09	09-10	10-11	11-12	12-13	13-14
Alumni Donors	4,188	3,901	3,652	3,329	3,092	3,109	3,097	2,869	2,903	2,722
Percent Giving	32.6%	30.2%	24.6%	26.0%	24.0%	25.3%	24.1%	22.0%	22.7%	20.0%



8.1 Undergraduate Faculty Size

The full time faculty count includes all individuals for whom teaching is at least 50 percent or more of their assignment. Librarians are also included in this count. Full Time Equivalent (FTE) is calculated by adding credits taught by adjuncts and others and adjusting for non-teaching assignments of those in the full time faculty count. Beginning in Fall 10, librarians are included in the full time count but not the FTE calculation because they are classified as faculty but teach outside the classroom. In addition, two coaches were reclassified as full time faculty because classroom teaching was 50 percent or more of their load.

	Fall 05	Fall 06	Fall 07	Fall 08	Fall 09	Fall 10	Fall 11	Fall 12	Fall 13	Fall 14
Full Time	72	72	73	71	71	75	79	78	79	78
FTE	79.3	77.8	80.4	78	80.8	77.7	81.6	79.4	78.1	77.6

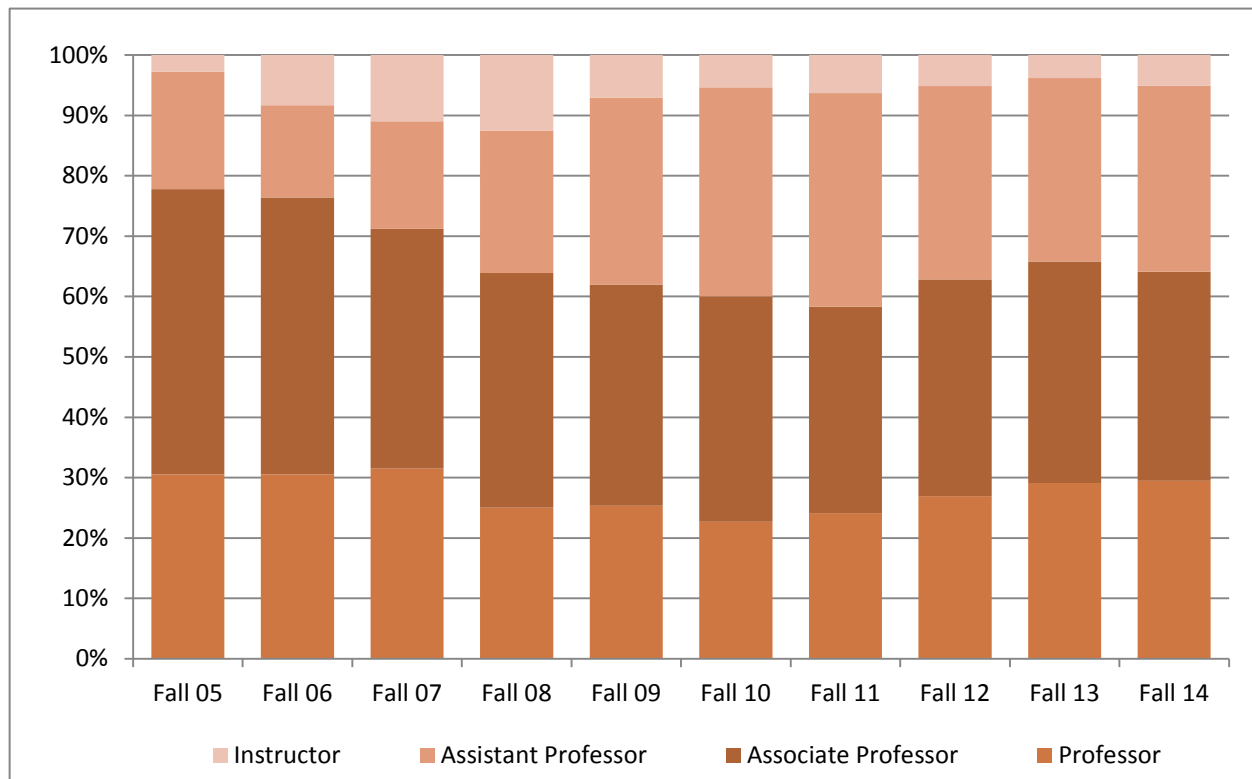


8.2 Undergraduate Faculty by Rank

These counts include all full time employees for whom classroom teaching is at least 50 percent or more of their assignment. Librarians are also included in this count.

Count	Fall 05	Fall 06	Fall 07	Fall 08	Fall 09	Fall 10	Fall 11	Fall 12	Fall 13	Fall 14
Professor	22	22	23	18	18	17	19	21	23	23
Associate Professor	34	33	29	28	26	28	27	28	29	27
Assistant Professor	14	11	13	17	22	26	28	25	24	24
Instructor	2	6	8	9	5	4	5	4	3	4

Percent of Total	Fall 05	Fall 06	Fall 07	Fall 08	Fall 09	Fall 10	Fall 11	Fall 12	Fall 13	Fall 14
Professor	30.6%	30.6%	31.5%	25.0%	25.4%	22.7%	24.1%	26.9%	29.1%	29.5%
Associate Professor	47.2%	45.8%	39.7%	38.9%	36.6%	37.3%	34.2%	35.9%	36.7%	34.6%
Assistant Professor	19.4%	15.3%	17.8%	23.6%	31.0%	34.7%	35.4%	32.1%	30.4%	30.8%
Instructor	2.8%	8.3%	11.0%	12.5%	7.0%	5.3%	6.3%	5.1%	3.8%	5.1%

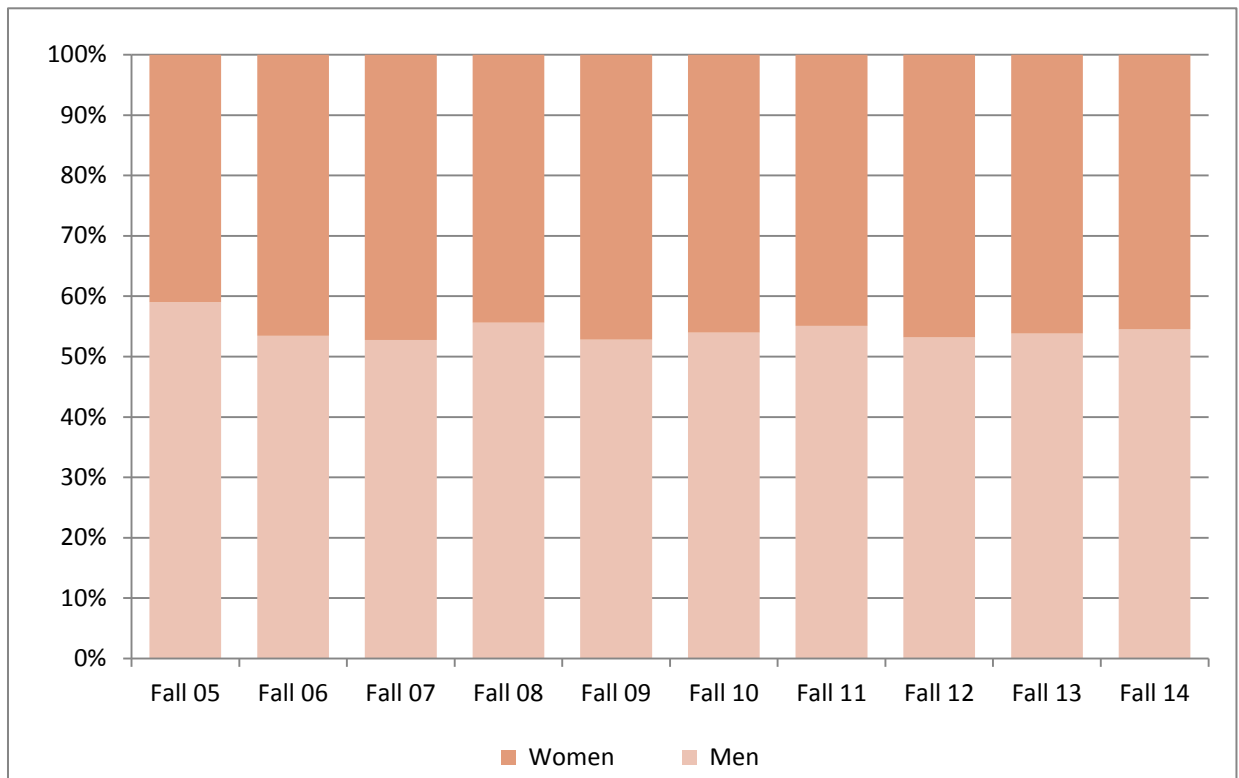


8.3 Undergraduate Faculty by Gender

These counts include all full time employees for whom classroom teaching is at least 50 percent or more of their assignment, librarians and a married couple that job share.

Count	Fall 05	Fall 06	Fall 07	Fall 08	Fall 09	Fall 10	Fall 11	Fall 12	Fall 13	Fall 14
Men	42.5	38.5	38.5	39.5	37.5	40.5	43.5	41.5	42.5	42.5
Women	29.5	33.5	34.5	31.5	33.5	34.5	35.5	36.5	36.5	35.5

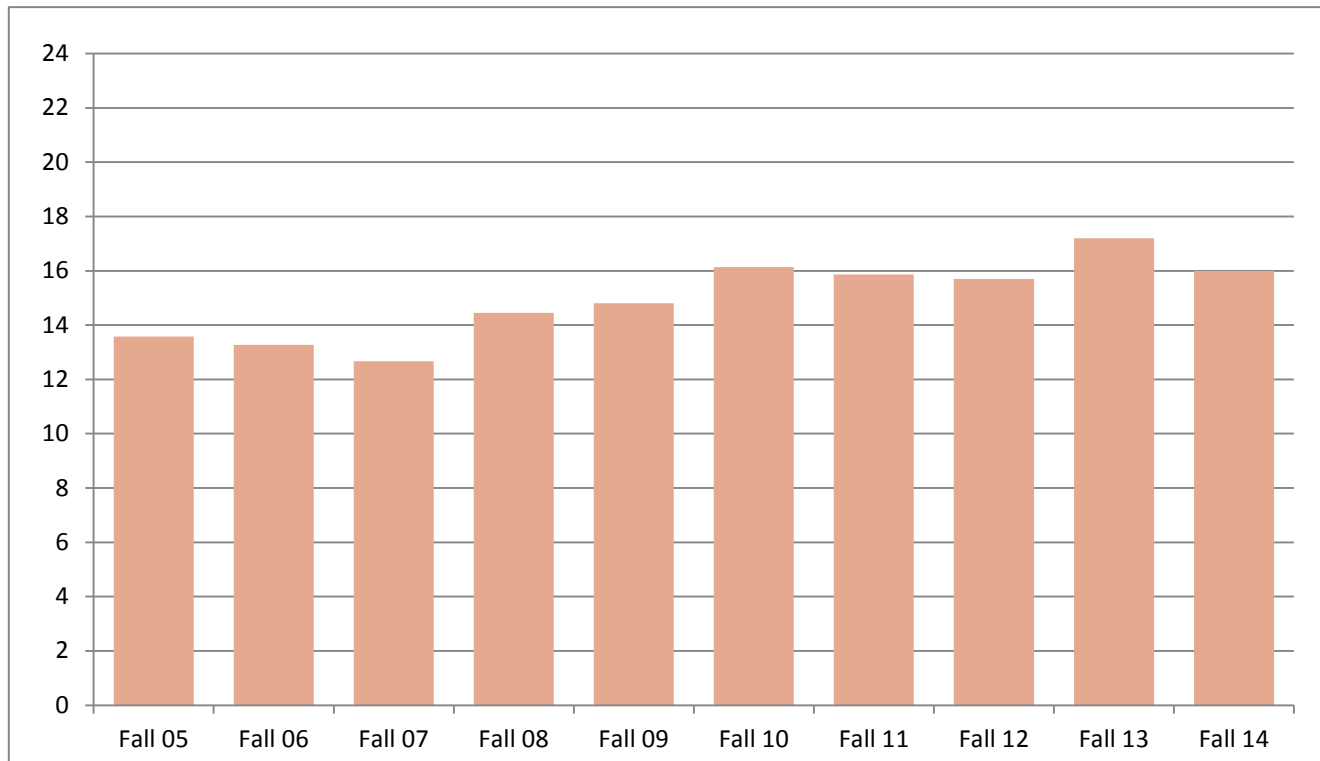
Percent of Total	Fall 05	Fall 06	Fall 07	Fall 08	Fall 09	Fall 10	Fall 11	Fall 12	Fall 13	Fall 14
Men	59.0%	53.5%	52.7%	55.6%	52.8%	54.0%	55.1%	53.2%	53.8%	54.5%
Women	41.0%	46.5%	47.3%	44.4%	47.2%	46.0%	44.9%	46.8%	46.2%	45.5%



8.4 Student/Faculty Ratio - Undergraduate Programs

The student to faculty ratio is calculated by dividing FTE student enrollment by faculty FTE.

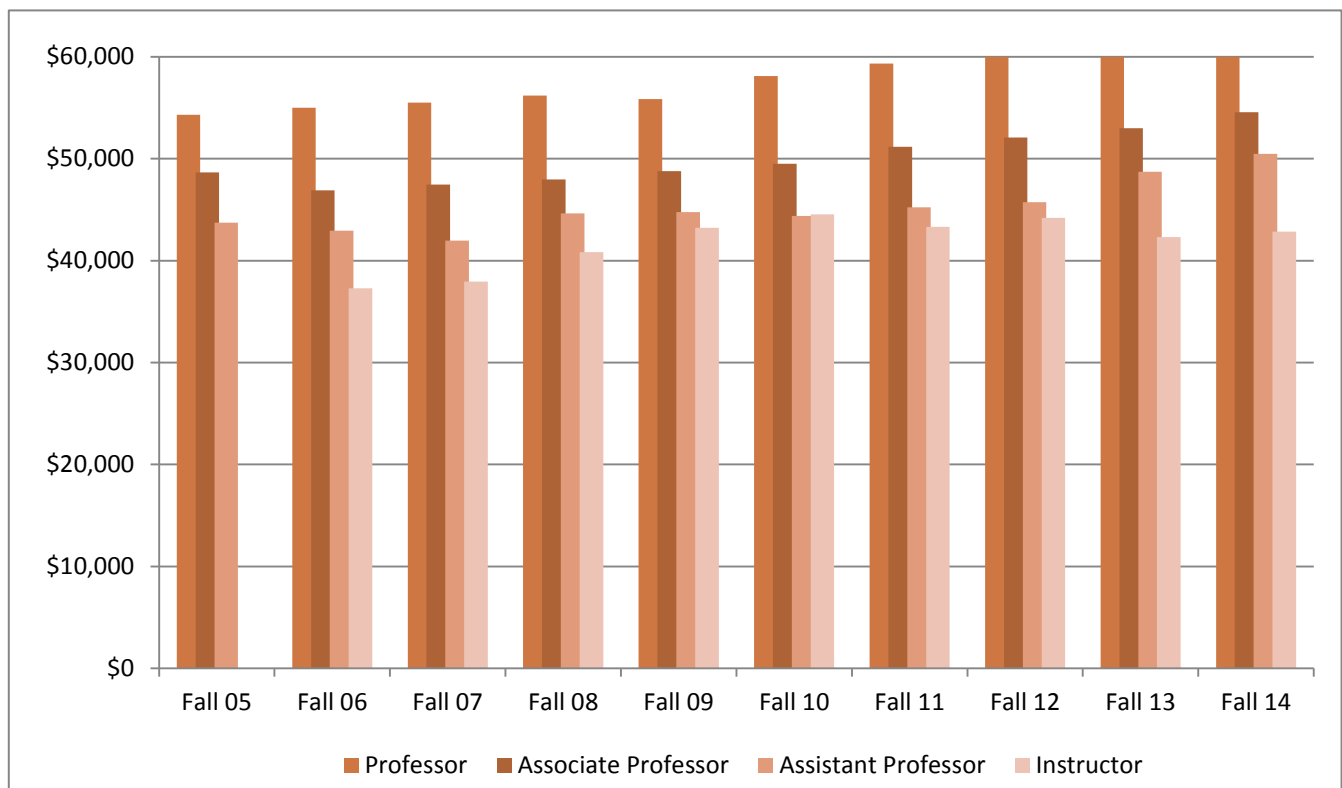
	Fall 05	Fall 06	Fall 07	Fall 08	Fall 09	Fall 10	Fall 11	Fall 12	Fall 13	Fall 14
FTE Students per FTE Faculty	13.6	13.3	12.7	14.5	14.8	16.1	15.9	15.7	17.2	16.0



8.5 Undergraduate Faculty Salaries

Average salaries are a snapshot of compensation in a given year. Averages can increase or decline from year to year based on changes within each rank through hiring and retirements. Since 2004-05, salary increases have been applied on January 1 of each year. Fall 2004 and subsequent averages reflect September 1 data and do not reflect these mid-academic year increases. Averages are for all full time faculty (see 9.1).

	Fall 05	Fall 06	Fall 07	Fall 08	Fall 09	Fall 10	Fall 11	Fall 12	Fall 13	Fall 14
Professor	\$54,326	\$54,996	\$55,499	\$56,186	\$55,849	\$58,123	\$59,330	\$61,320	\$63,963	\$64,712
Associate Professor	\$48,657	\$46,911	\$47,468	\$47,964	\$48,785	\$49,507	\$51,183	\$52,083	\$53,000	\$54,559
Assistant Professor	\$43,736	\$42,938	\$41,969	\$44,651	\$44,770	\$44,378	\$45,236	\$45,727	\$48,720	\$50,480
Instructor		\$37,297	\$37,952	\$40,831	\$43,240	\$44,548	\$43,319	\$44,186	\$42,301	\$42,860



9.1 Undergraduate Study Abroad

Study abroad provides students with opportunities to learn and grow in ways not possible on campus. Manchester encourages study abroad through both January Session and summer study tours and immersion for a semester or full year through off-campus residency programs.

	04-05	05-06	06-07	07-08	08-09	09-10	10-11	11-12	12-13	13-14
January Session and summer	108	105	101	97	130	83	104	90	97	108
Semester or Year	19	13	19	17	20	26	21	25	21	16
Total	127	118	120	114	150	109	125	115	118	124

