

## Increase Biodiversity/Better Water Quality?

In 2015 Manchester University Environmental Studies Program received a special opportunity to reintroduce a federal endangered mussel species back into the Eel River. These mussels are called clubshell mussels and were once native to many Midwestern stream including the Eel River. However over time population continually decrease all across the Midwest, to the point that they are only found in large population in one river in Pennsylvania. In the Eel River weathered dead clubshell mussels can be found, however these dead shells could be greater the 75 years old. Due to a massive road reconstruction project, thousands of alive mussels were available for relocation. In 2015 150 mussels transplanted into the Eel River in three location with no idea how they would react to their new environment. During the summer of 2016 a field survey was conducted to better understand how the mussels had reacted to the river. The survey provided outstand results with 149 of the 150 mussels being found alive!!! This lead to 3,000 more mussels being relocated into the Eel River. Surveys in 2017 and 2018 continue to show impressive results with only 3 mussels being found dead. Will this result cannot be tied back directly to upland conservation practices it does demonstrate that whatever had happened in the past to eradicate these mussels must not be existant now since the mussels are alive and thriving.





# Clubshell Mussels



# Upcoming Events

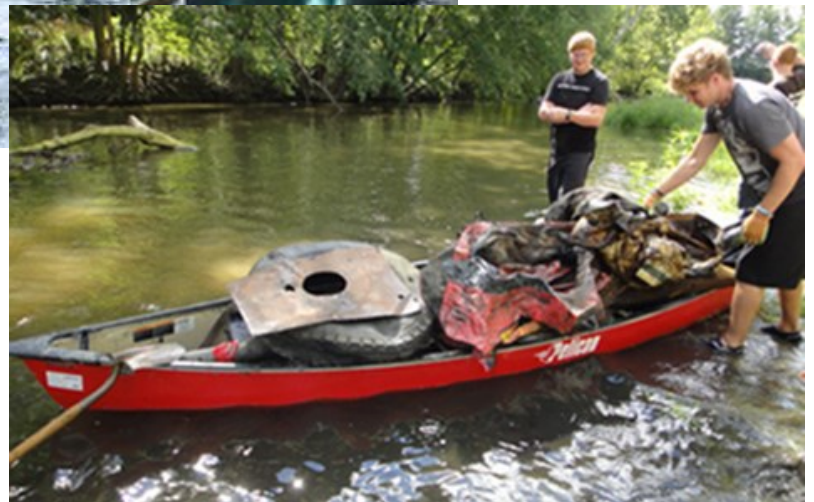
**July 25th:**  
Field Day  
Runkle Farms Two Stage Ditch

**August 2nd:**  
Annual Meeting  
Steve Sickafoose Barn on SR 105

**August 25th:**  
Annual Canoe Float  
MU Cabin (must register prior to event)

**September 8th:**  
Annual River Clean-Up  
North Manchester Street Department

For more information Please Contact Herb Manifold, 260-982-5101 or [hfmanifold@manchester.edu](mailto:hfmanifold@manchester.edu)







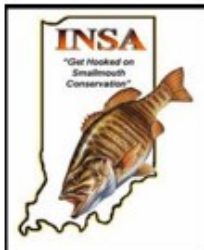
THANKS TO ALL OUR PARTNERS!!!



Local Farmers/Land Owners



Miller's Canoe Rentals



North Manchester Center for History

County Highway Departments



Contact Information

Herb Manifold  
Environmental Studies Grants Coordinator  
260-982-5101

hfmanifold@manchester.edu  
604 East College Avenue  
North Manchester, Indiana 46962