



2014 Pathways Summer Service

Three students participated in the Manchester University Summer Service Program in 2014. They each spent 10 weeks at a site volunteering and making a difference in someone's life.

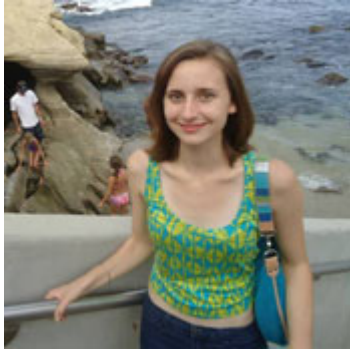


Merandah Evans participated as a first-year student at Manchester University majoring in Biology-Chemistry and minoring in Criminal Justice. She is originally from Wabash/Roann, Indiana. She is very active at Manchester and in her community, and has spent countless hours doing volunteer work. In 2014, she volunteered for two months of her summer at Camp Discovery in Gainesboro, Tennessee. She worked with mentally and physically disabled children and adults. She hopes to gain more patience and appreciation towards other life styles. Merandah wishes to encourage others to volunteer too because it really does make a difference!



Rissa Loc participated as a sophomore at Manchester University studying Biology-Chemistry. She is originally from Kalamazoo, Michigan. Rissa actively volunteers at the Zion Lutheran Church Community Dinners in North Manchester, and helps out with Susan G. Komen in Southwest Michigan. The summer before her freshmen year she adventured to Tanzania, Africa, where her volunteer experience started off. In 2014, Rissa travelled to Monticello, Iowa to volunteer at Camp Courageous. Camp Courageous is a disability camp for children and adults. Camp Courageous has many activities for the campers to partake in, including kayaking, swimming, tent camping, and many others. All activities are completely equipped with the campers' necessities. The campers reside at the camp from Sunday until Friday afternoon. Rissa was a full-time counselor from mid-May until mid-

August. There are so many opportunities for her to learn from, and she is incredibly excited and grateful for the opportunities to come!



Emily Pleadwell participated as a sophomore at Manchester University who hails from the small town of Lawrence, Michigan. Double-majoring in English: Writing and Mathematics with a minor in TESOL, Emily hopes to follow up her undergrad experience by teaching English in a foreign country for a few years. Emily has in the past volunteered at Peabody Retirement Community and is currently the Student Specialist for the Pathways Program at MU. In 2013 , Emily participated in Pathways by volunteering over the summer at Interval House – an organization that assists victims of domestic violence in LA and Orange Counties – in Long Beach, California. In 2014, she expanded her volunteer experience to include a summer volunteering in Monteillier, France hosted by Manchester alumna Beverly Ott '80. In June, Emily assisted Beverly with a fundraiser for her micro-loan business based in Togo, Africa and assisted with new advertisement for her family-owned bed and breakfast. In July she worked with the Centre Social, an organization that provides kids with learning experiences over the course of the summer.